



THE WORLD BANK



WORKSHOP

Growth and Inclusion: Theoretical and Applied Perspectives

Session I

Food Inflation: Drivers and Policy Implications

**Subir Gokarn
Reserve Bank of India**

January 12, 2012

The Claridges Hotel
12 Aurangzeb Road
New Delhi, India



Food Inflation: Drivers and Policy Implications

Subir Gokarn
Deputy Governor
Reserve Bank of India

Seminar on
Growth and Inclusion:
Theoretical and Applied Perspectives

New Delhi, January 12, 2012



Structure of Presentation

- ◆ Characteristics of food inflation
- ◆ Demand factors
- ◆ Supply factors
- ◆ Policy implications



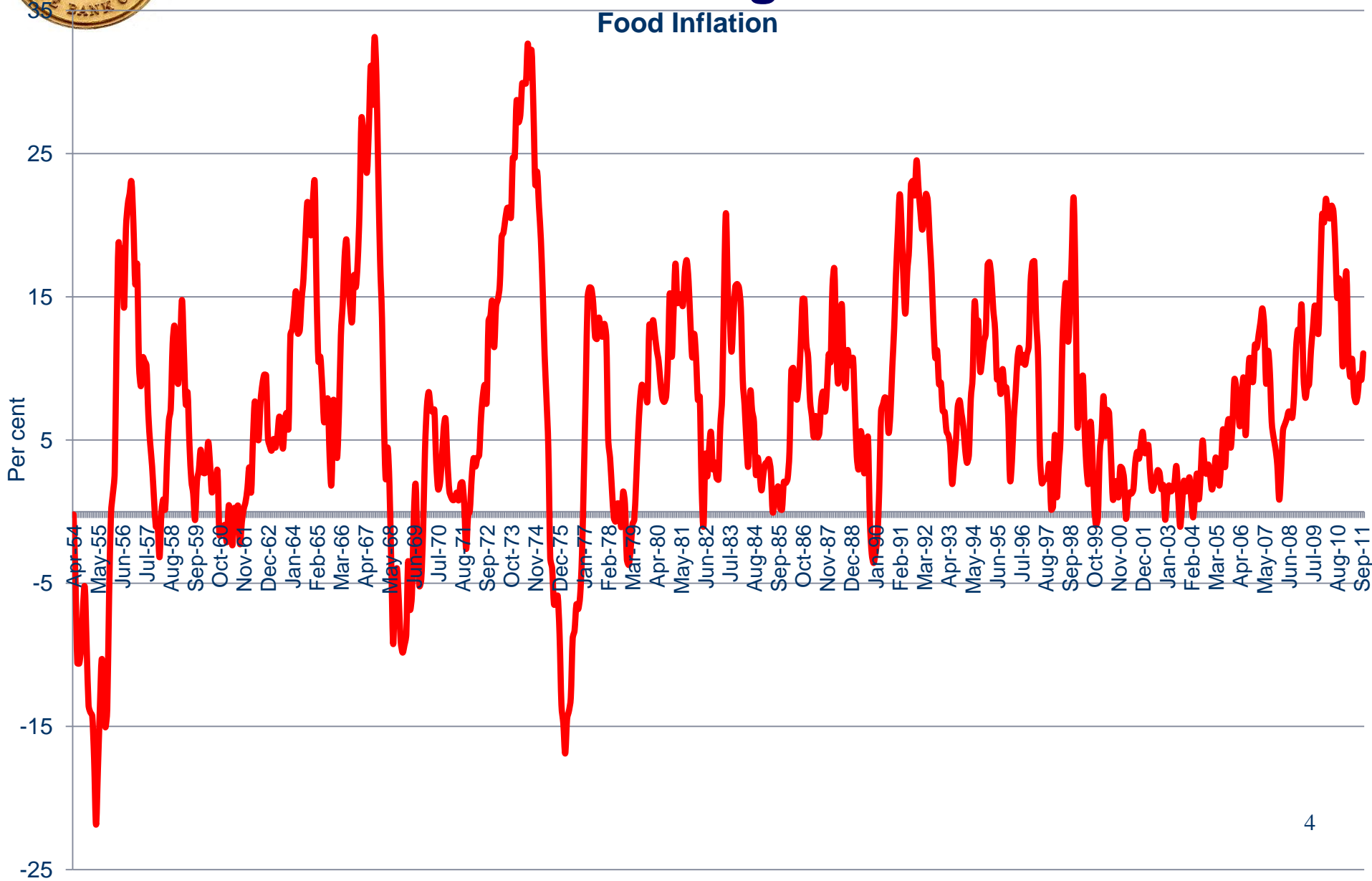
CHARACTERISTICS OF FOOD INFLATION



Food Inflation in India

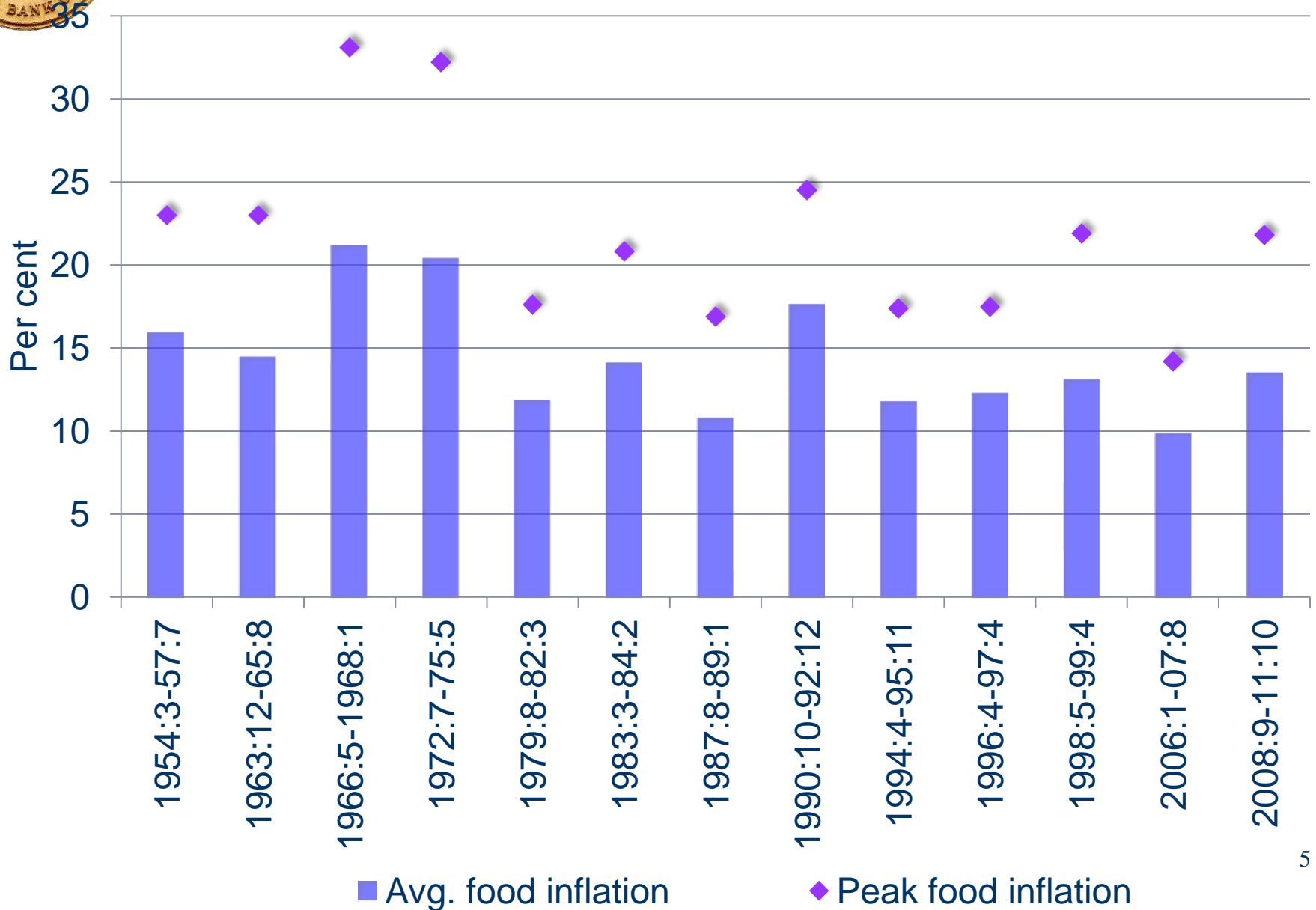
A Long View

Food Inflation





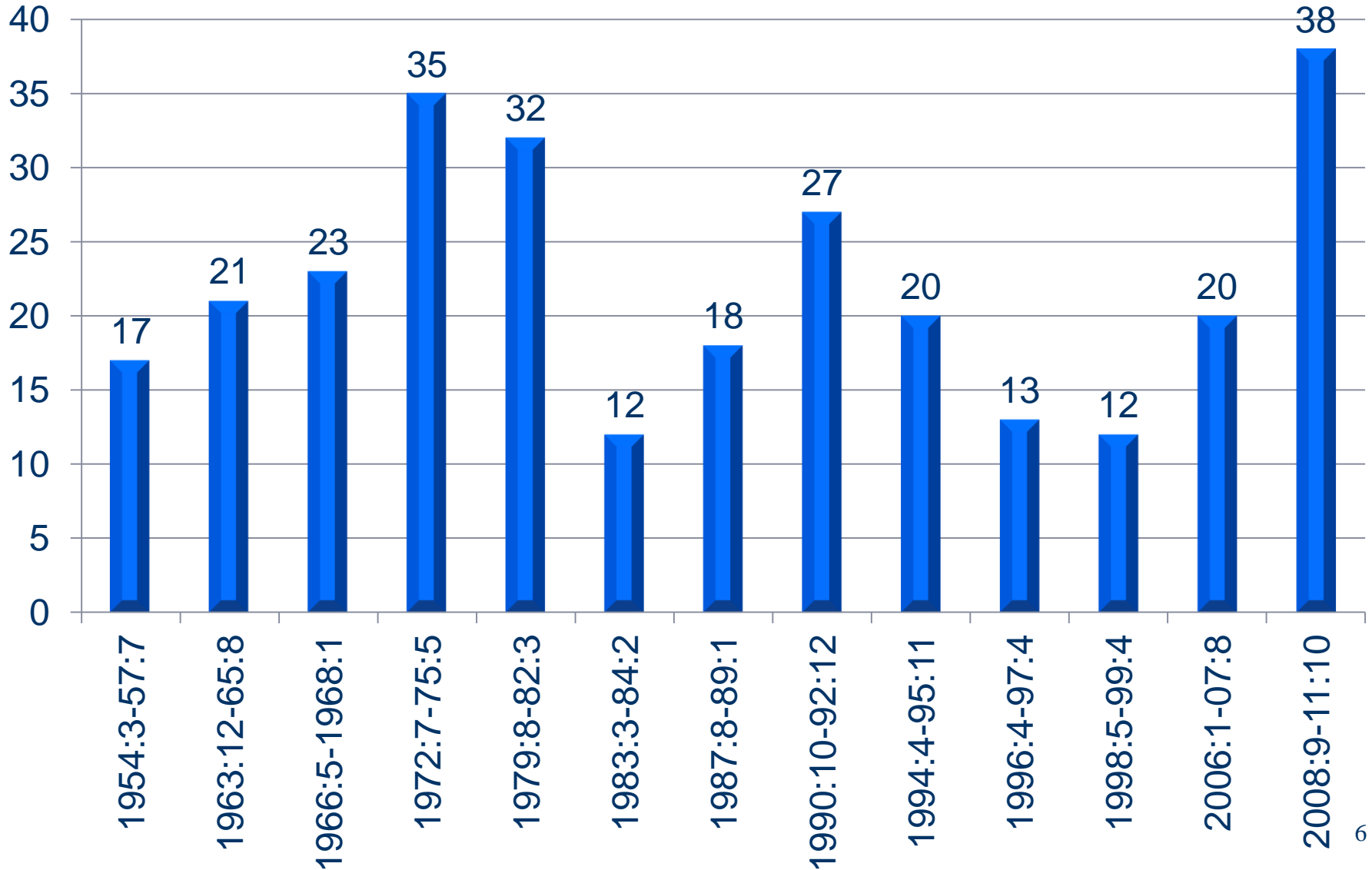
Persistence of Food Inflation





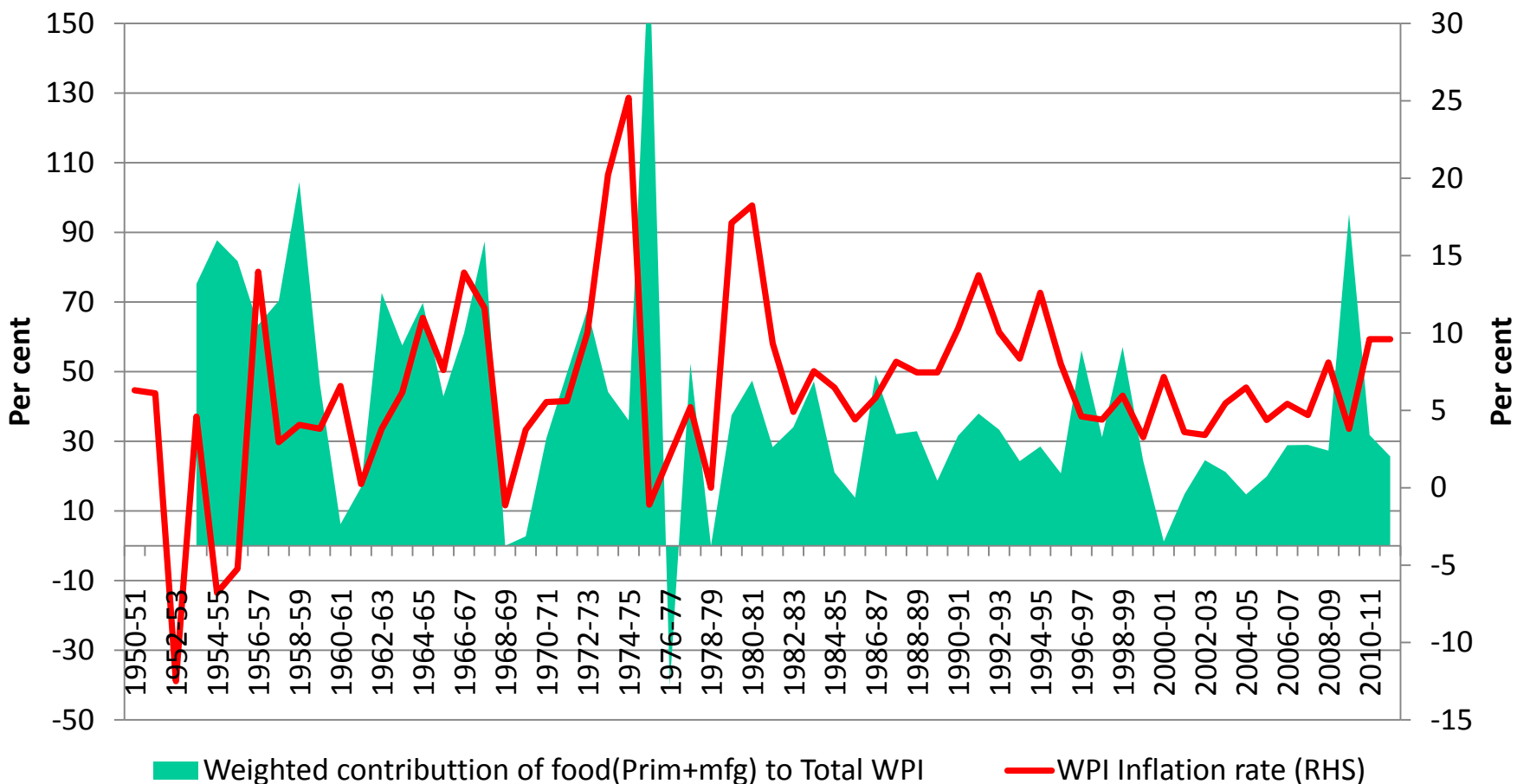
Persistence of Food Inflation...2

Number of months



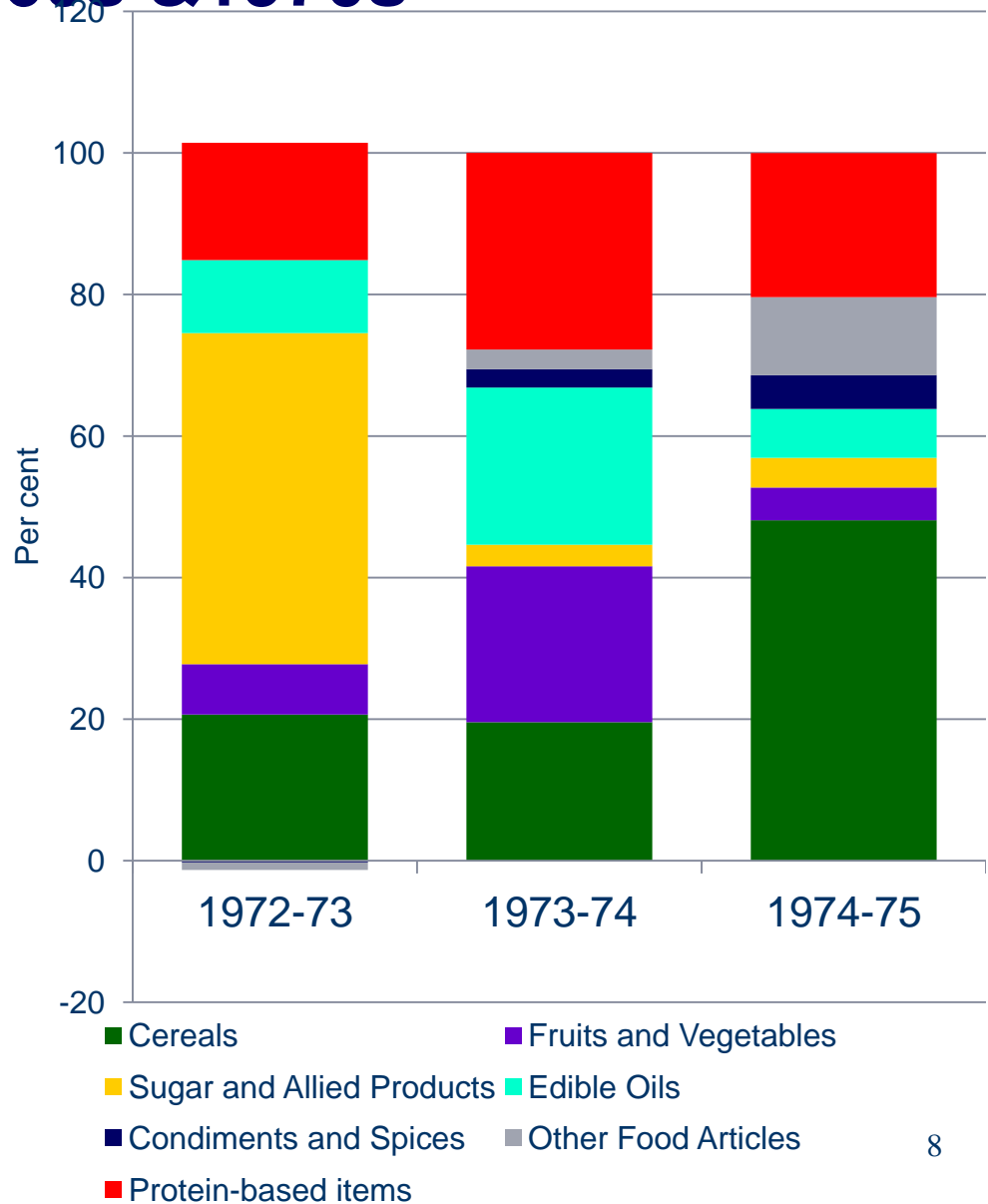
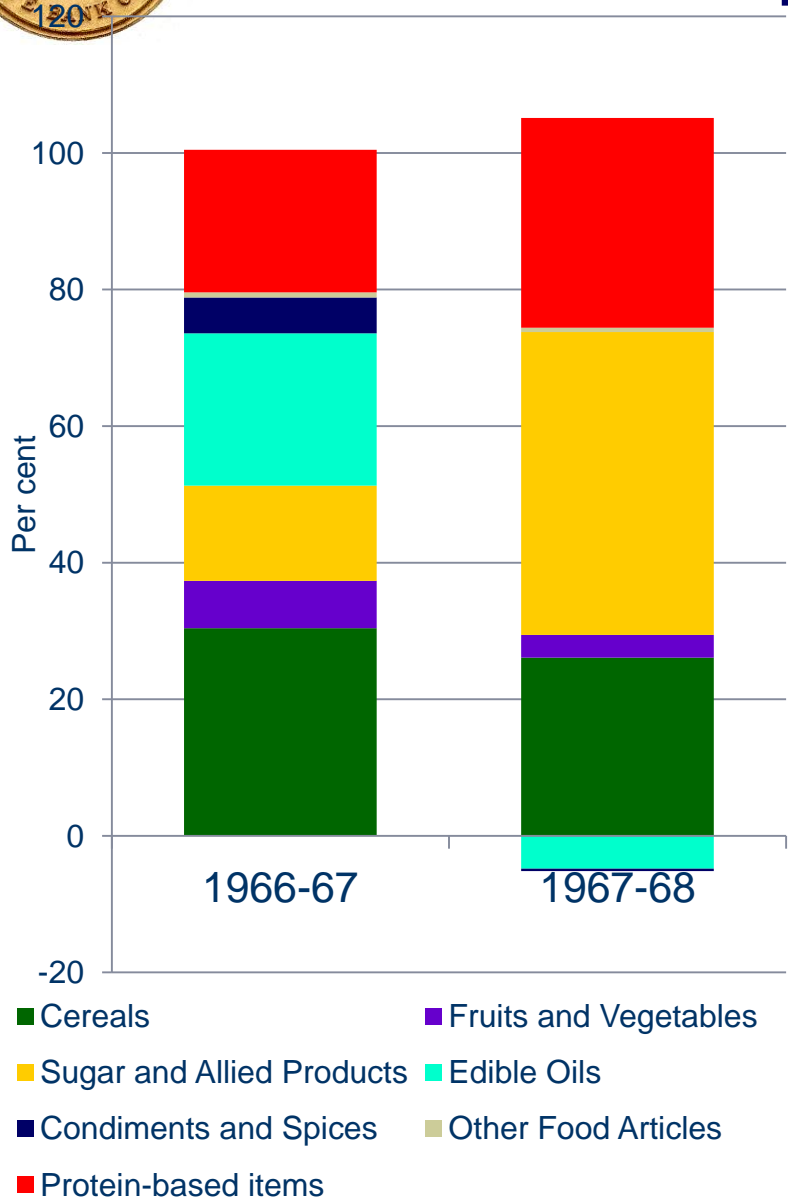


Contribution of Food Inflation



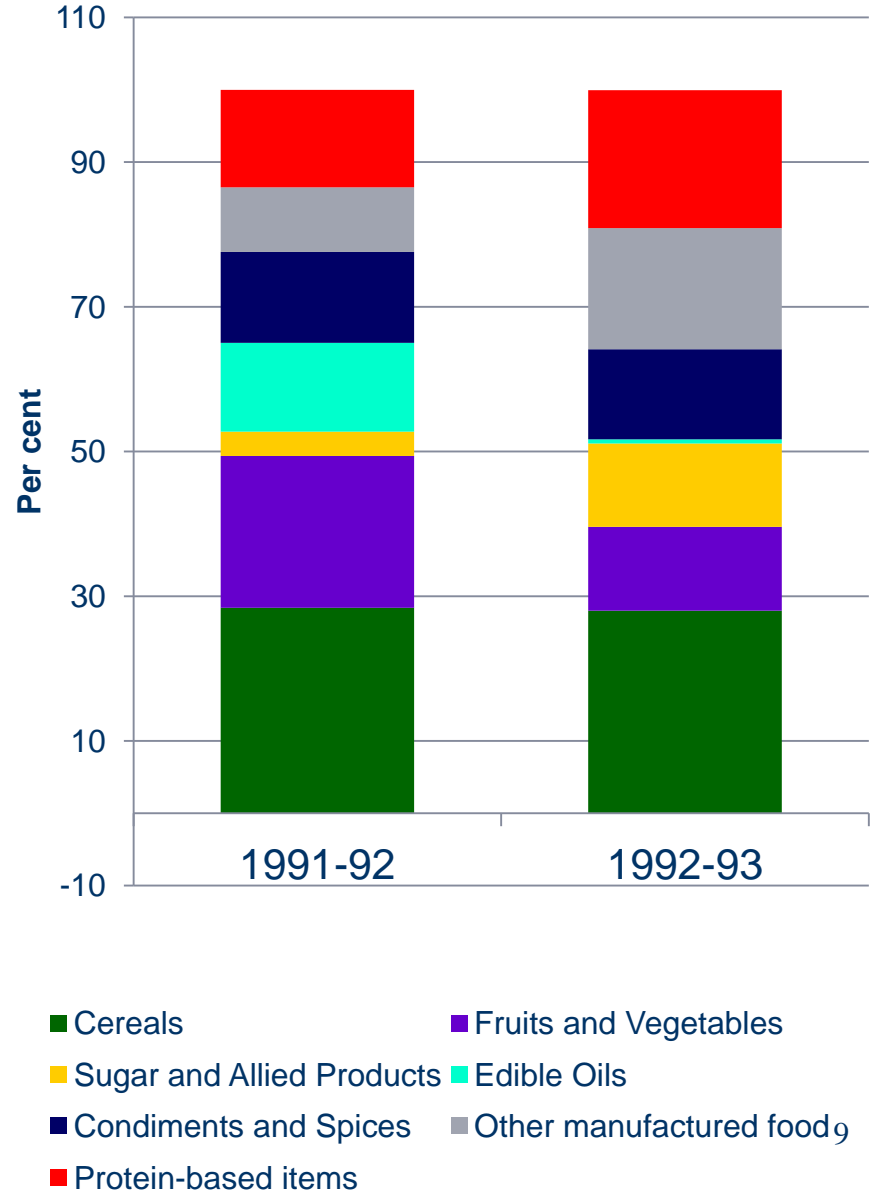
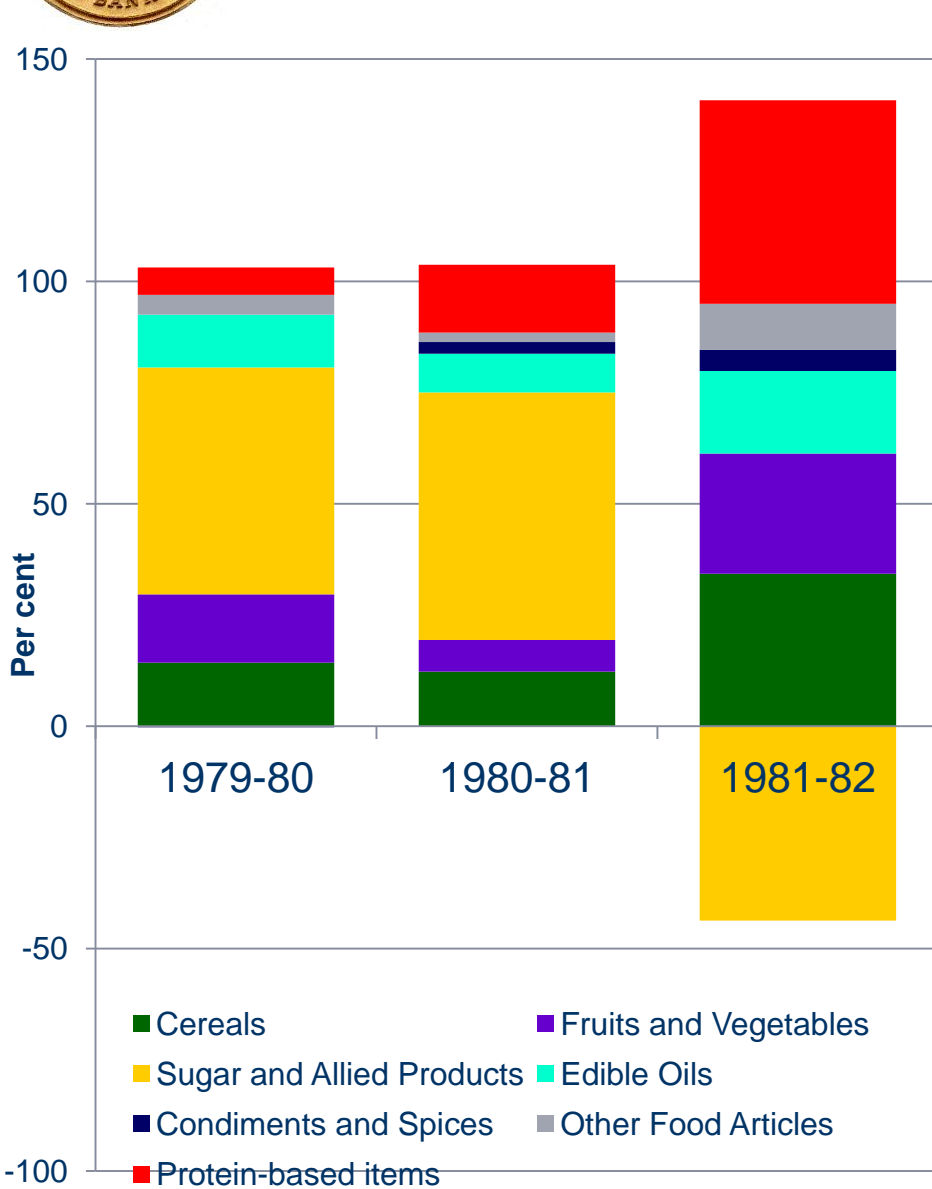


Drivers of Food Inflation 1960s & 1970s



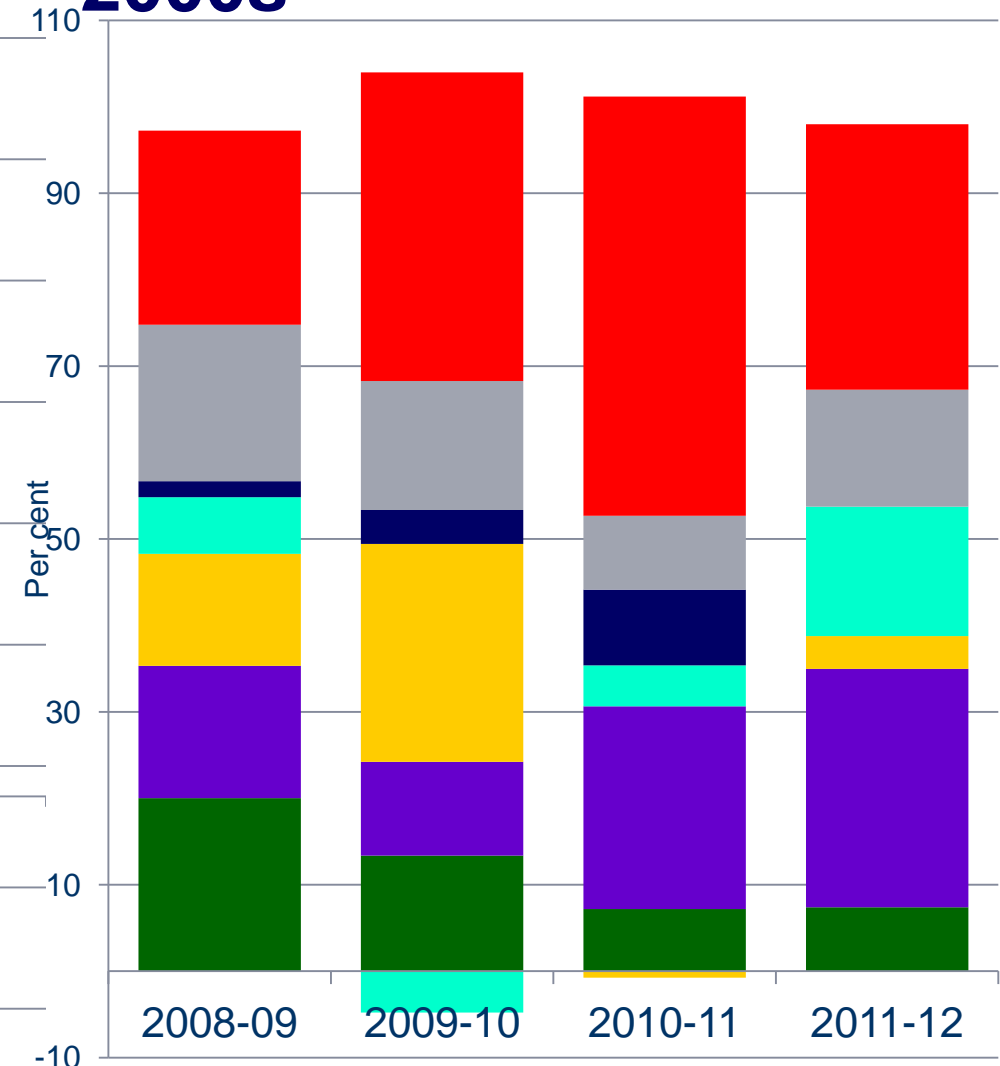
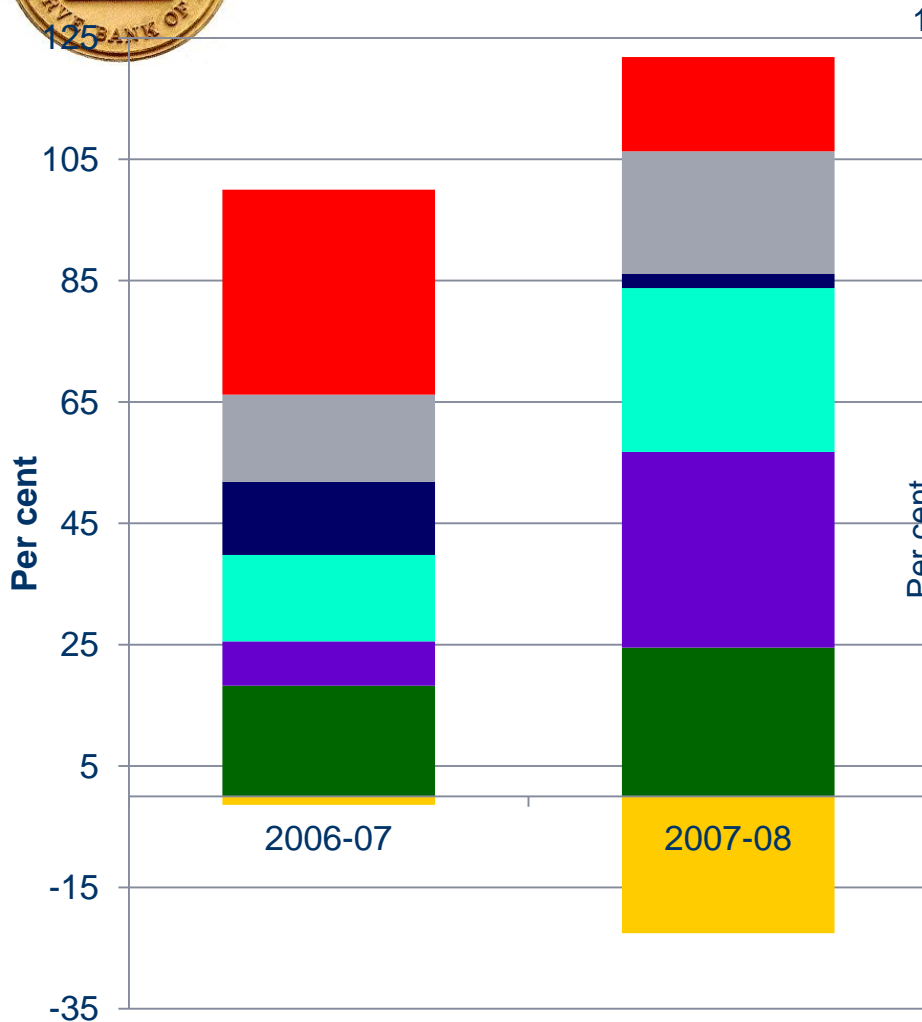


Drivers of Food Inflation 1980s & 1990s





Drivers of Food Inflation 2000s

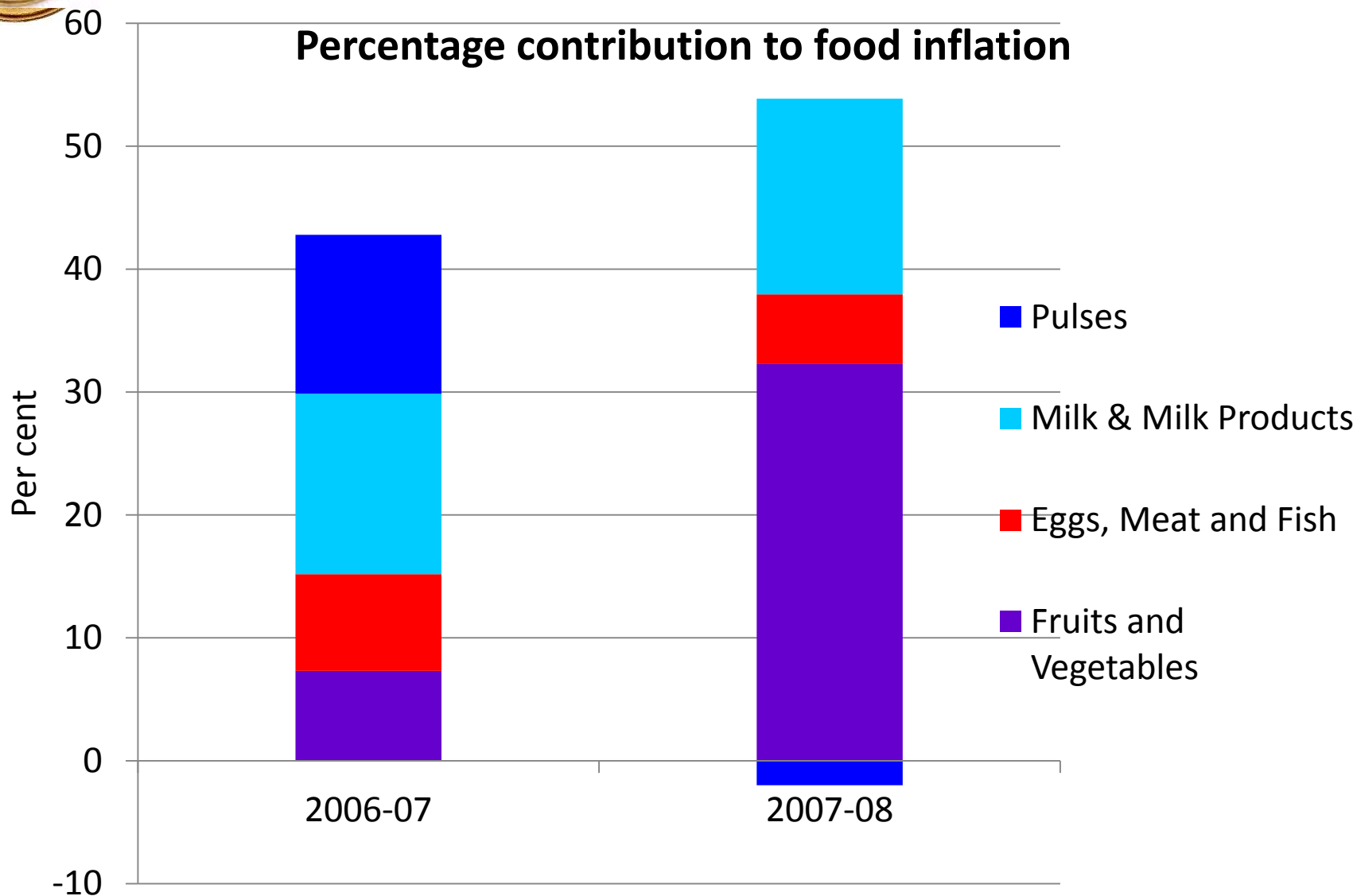


- Cereals
- Sugar and Allied Products
- Condiments and Spices
- Protein-based items
- Fruits and Vegetables
- Edible Oils
- Other manufactured food

- Cereals
- Sugar and Allied Products
- Condiments and Spices
- Protein-based items
- Fruits and Vegetables
- Edible Oils
- Other manufactured food

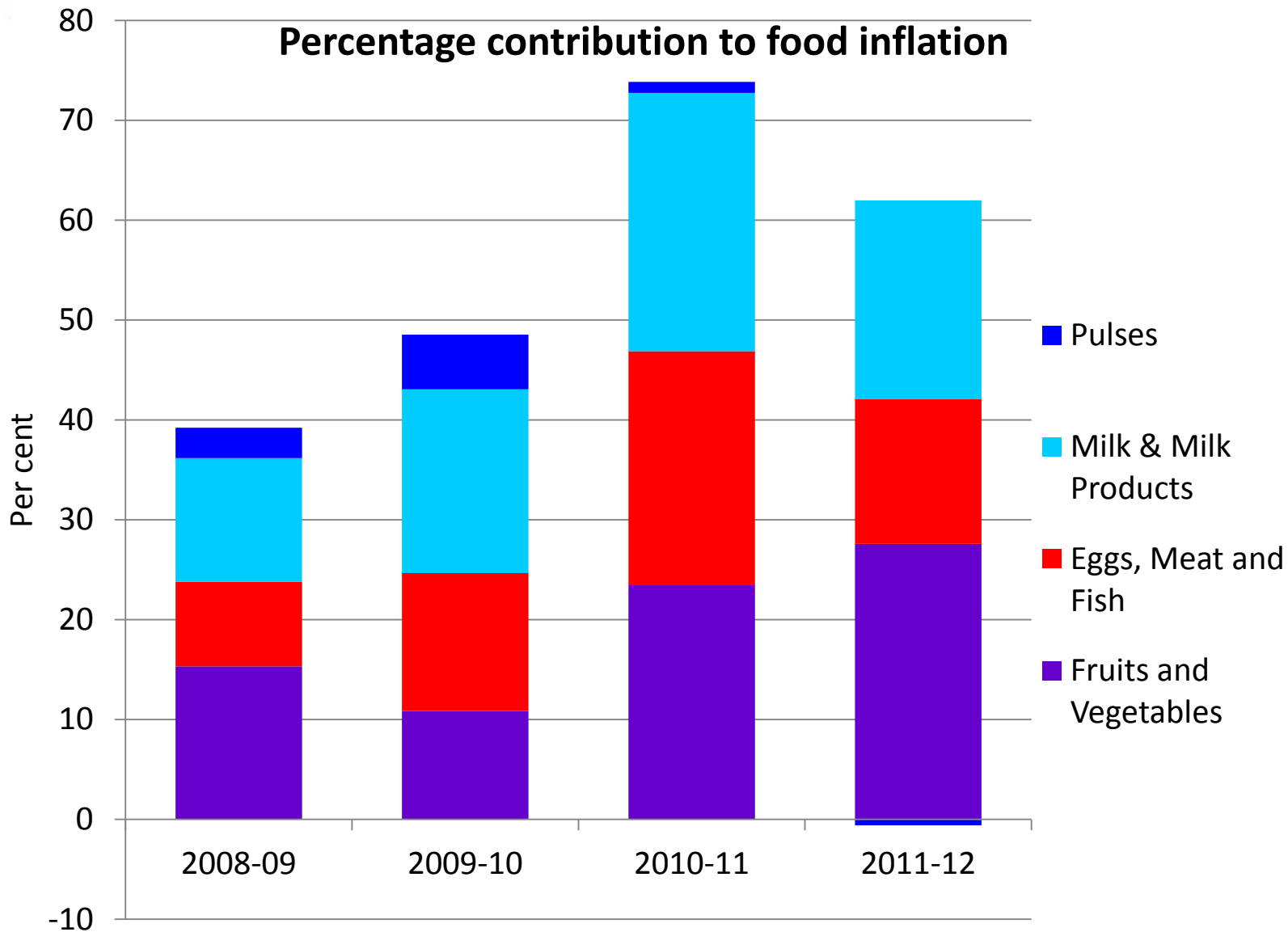


Proteins and Fruits & Veggies





Proteins and Fruits & Veggies...2



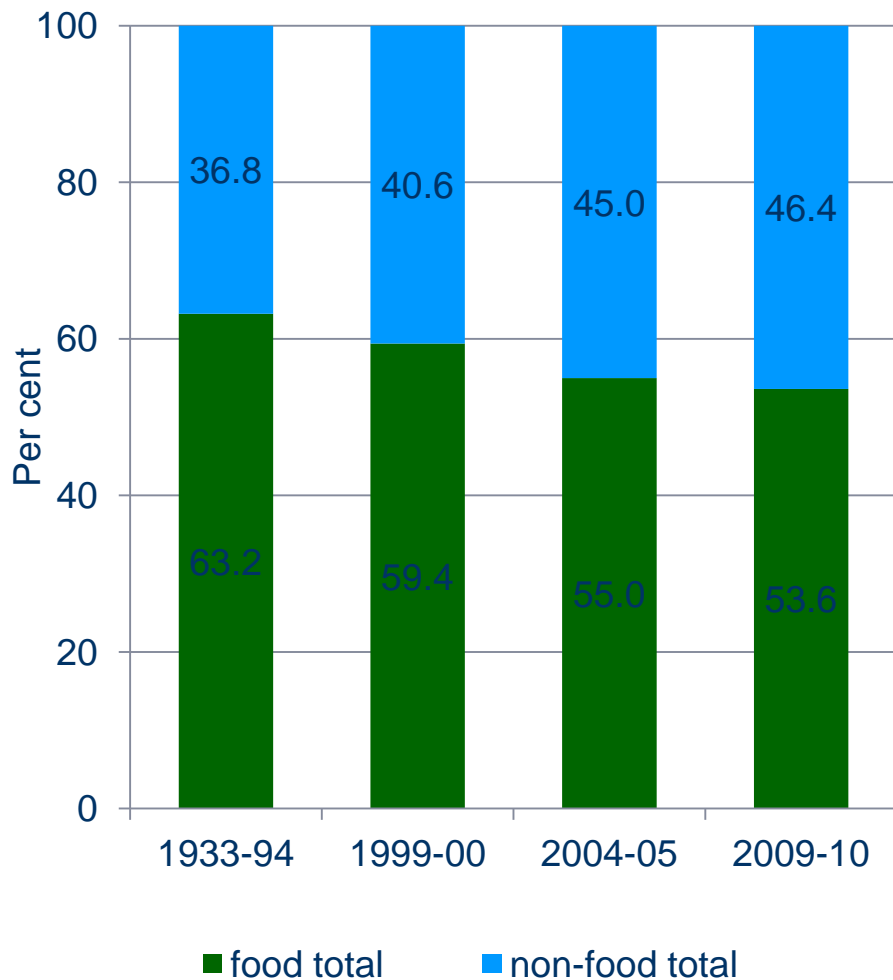


DEMAND FACTORS

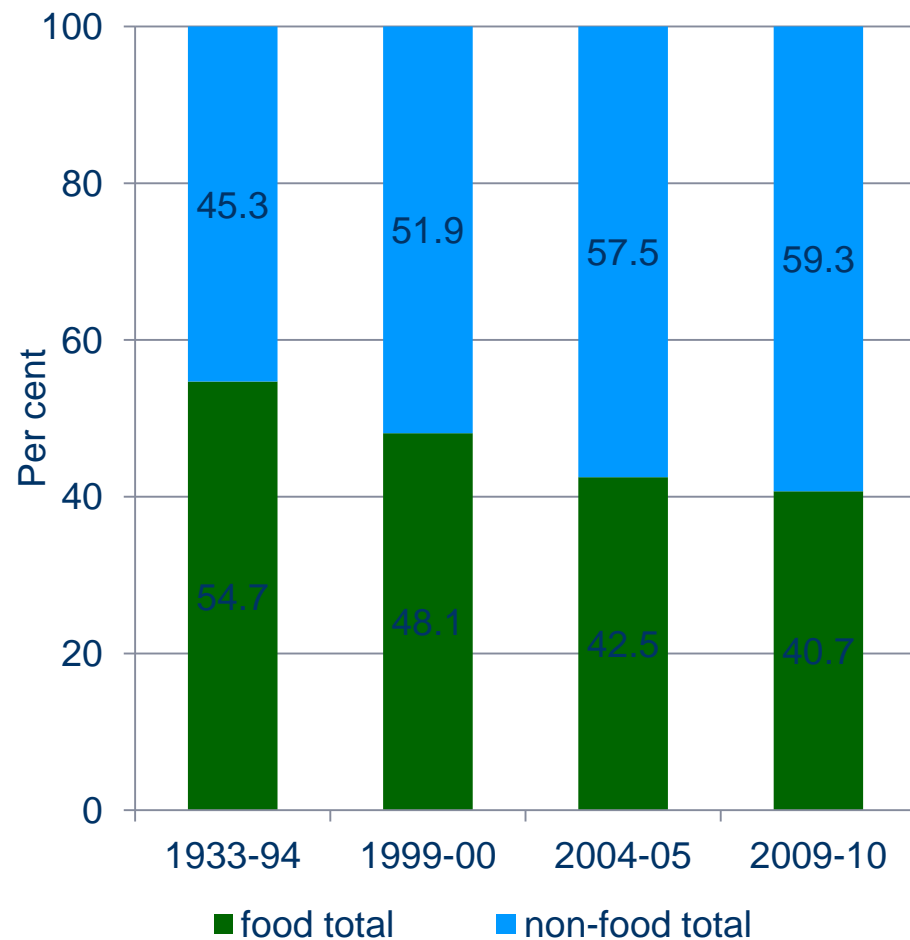


Changing Consumption Patterns

MPCE Rural



MPCE Urban

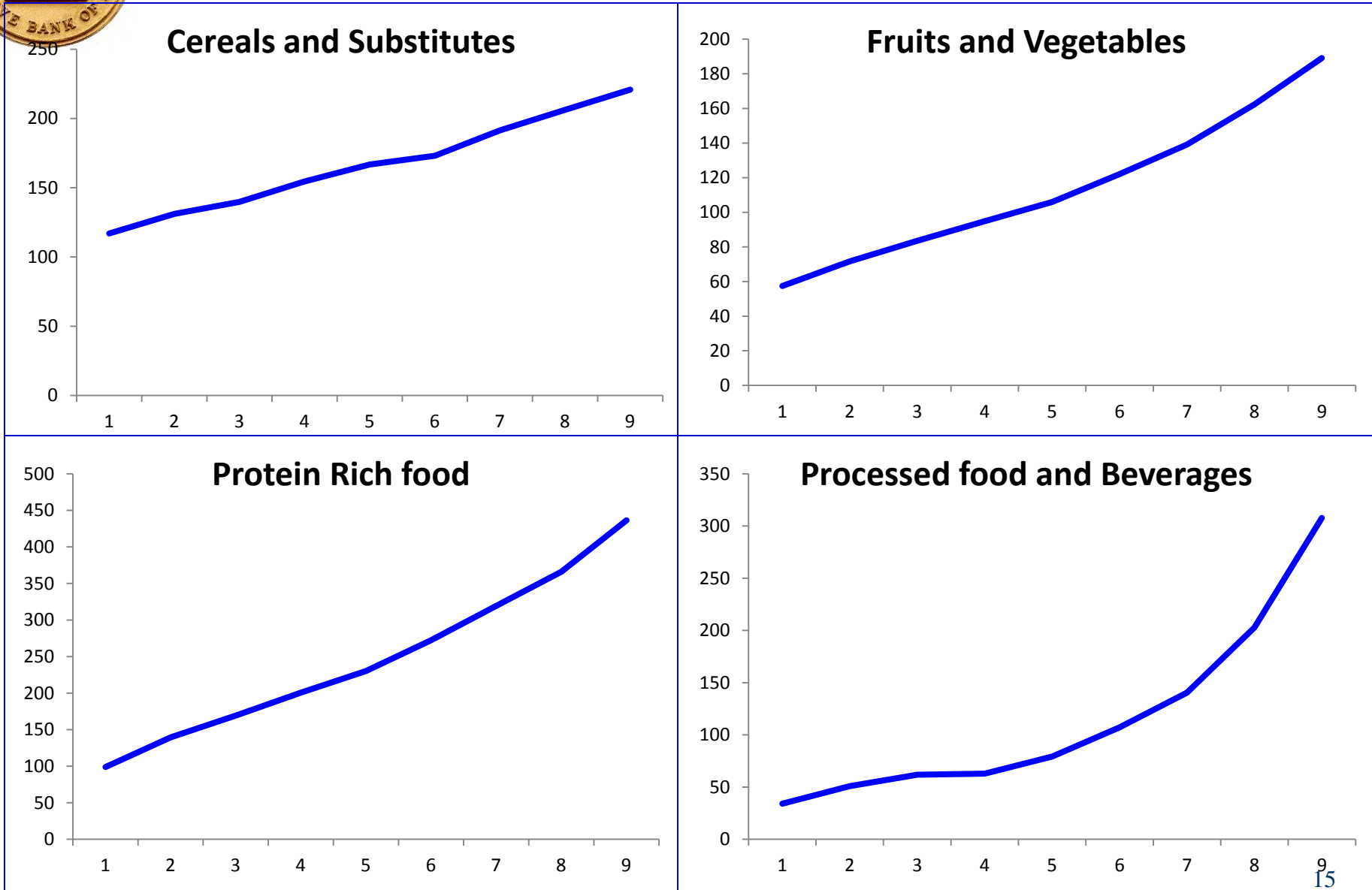


Source: NSSO surveys, Various rounds



Urban Engel Curves

Decile-wise Monthly PCE on Select Food Items: All India (Urban) (Rupees)



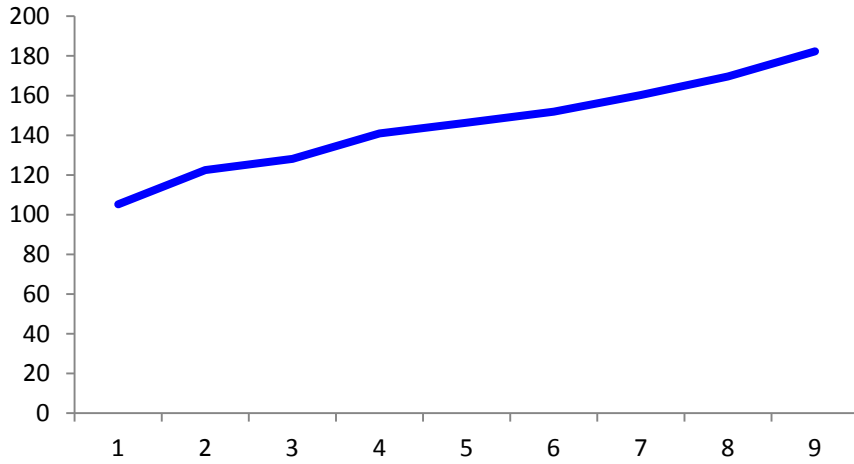
Source: Estimated from NSSO unit level data, 2009-10



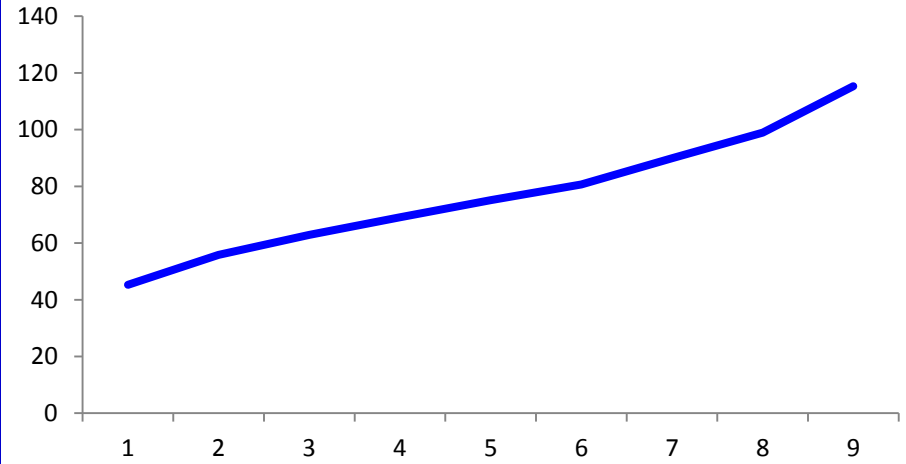
Rural Engel Curves

Decile-wise Monthly PCE on Select Food Items: All India (Rural) (Rupees)

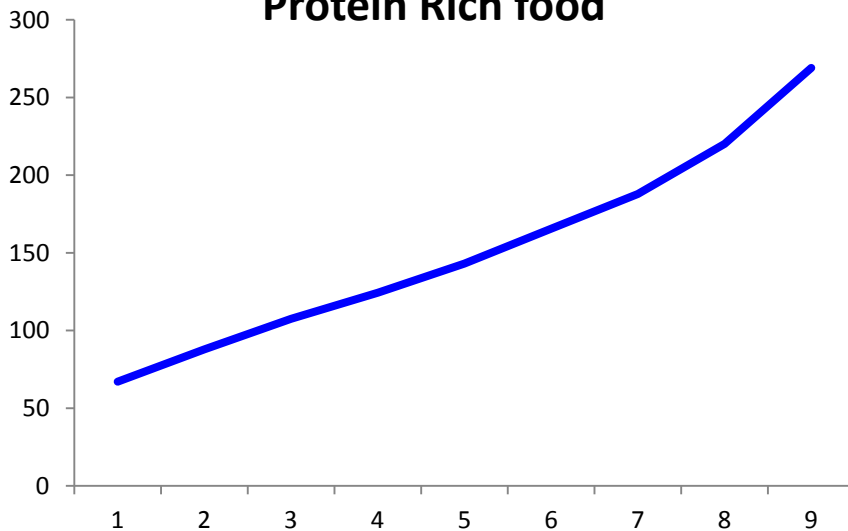
Cereals and Substitutes



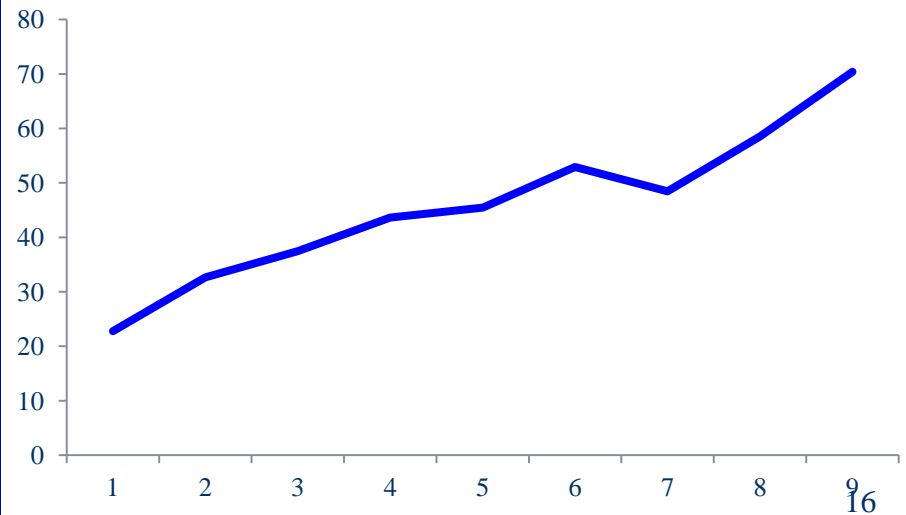
Fruits and Vegetables



Protein Rich food



Processed food and Beverages





Income Elasticities

Multiples of MPCE: Top Decile/Bottom Decile

	Rural Areas	Urban Areas
Cereals and Substitutes	1.7	1.9
Fruits and Vegetables	2.5	3.3
Protein Rich food	4.0	4.4
Processed food & Beverages	3.1	9.0

Source: NSSO 2009-10, GOI.

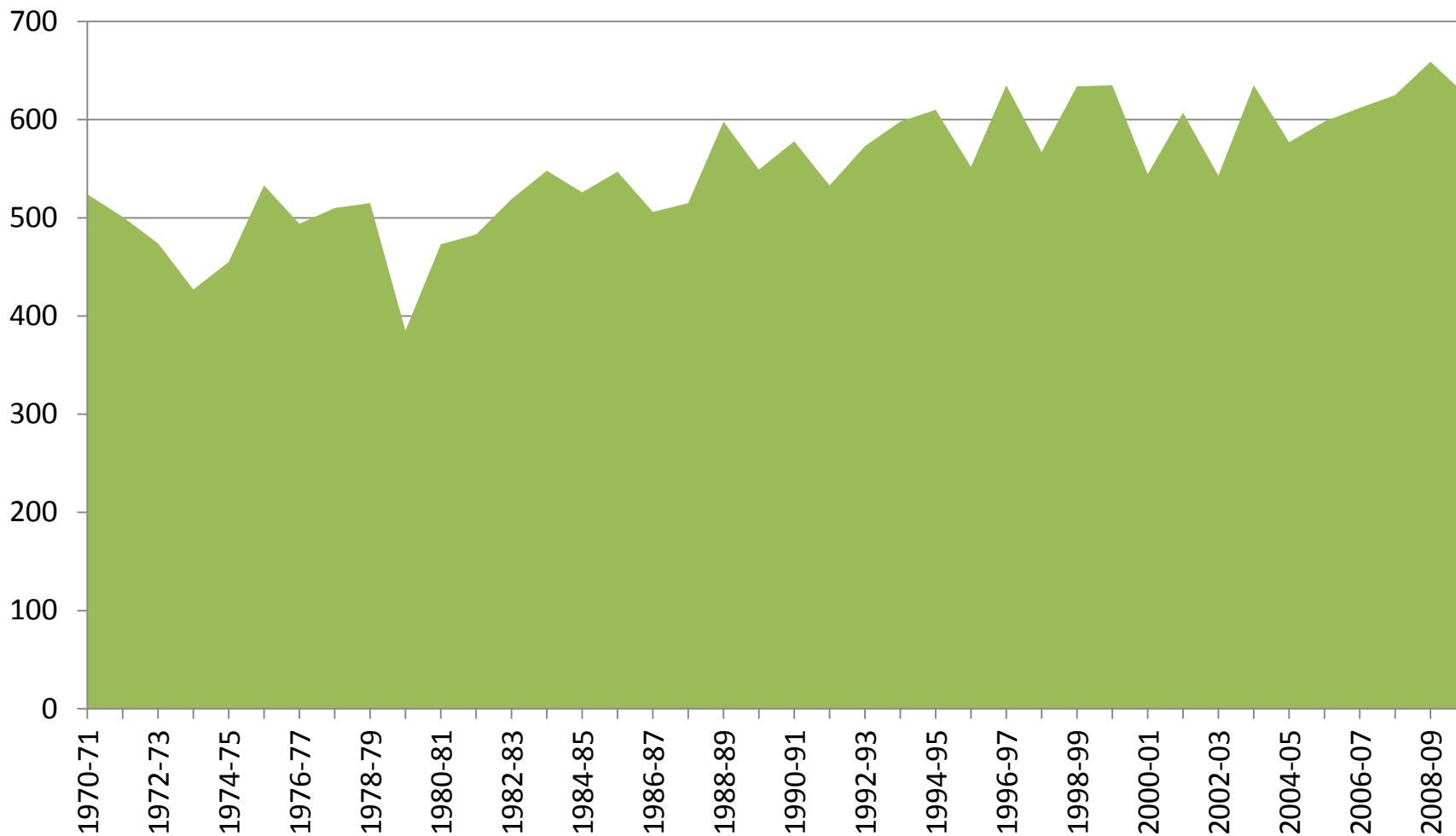


SUPPLY FACTORS



Stagnant Productivity in Pulses

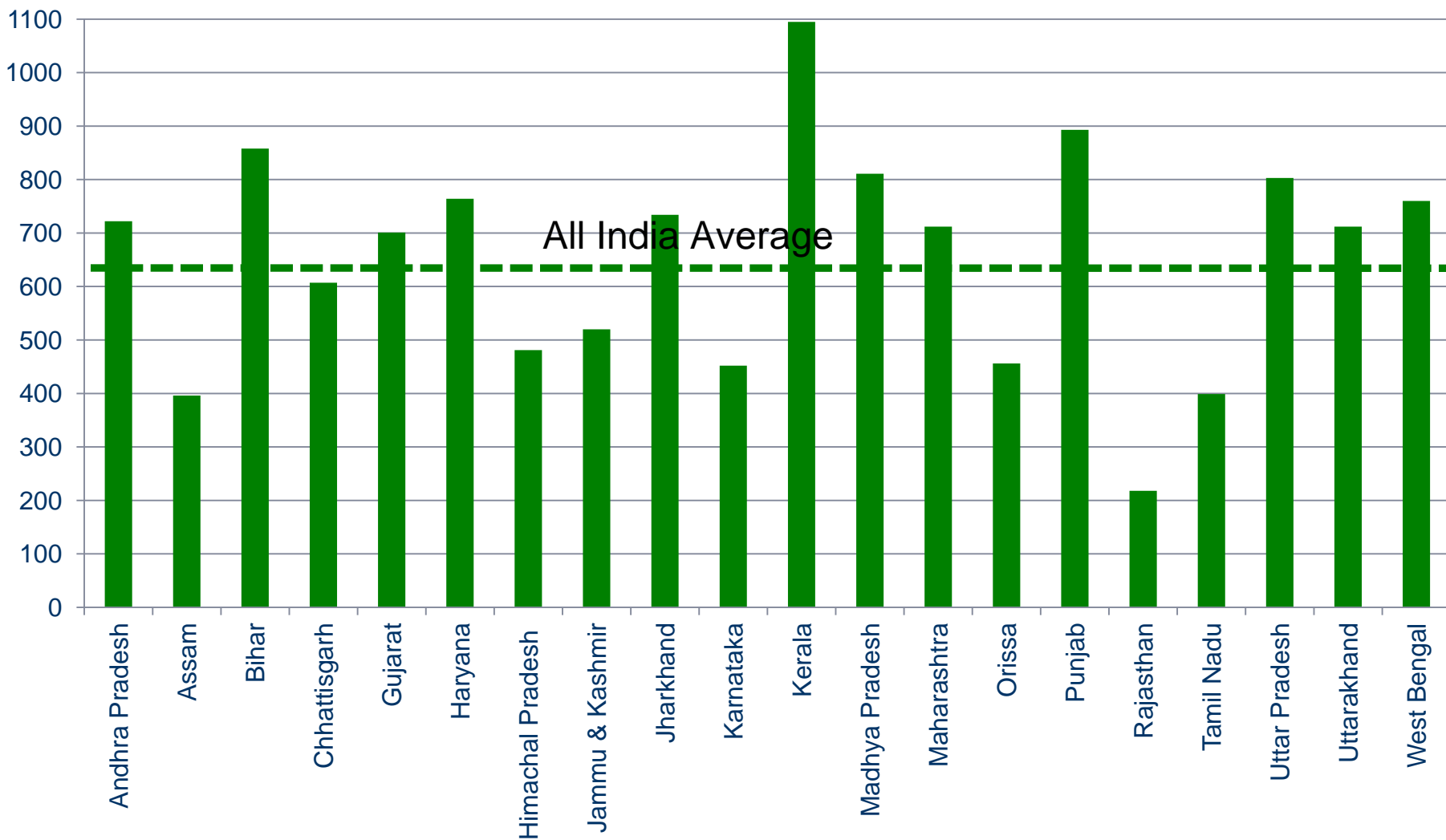
Yield of pulses (Kg per hectare)





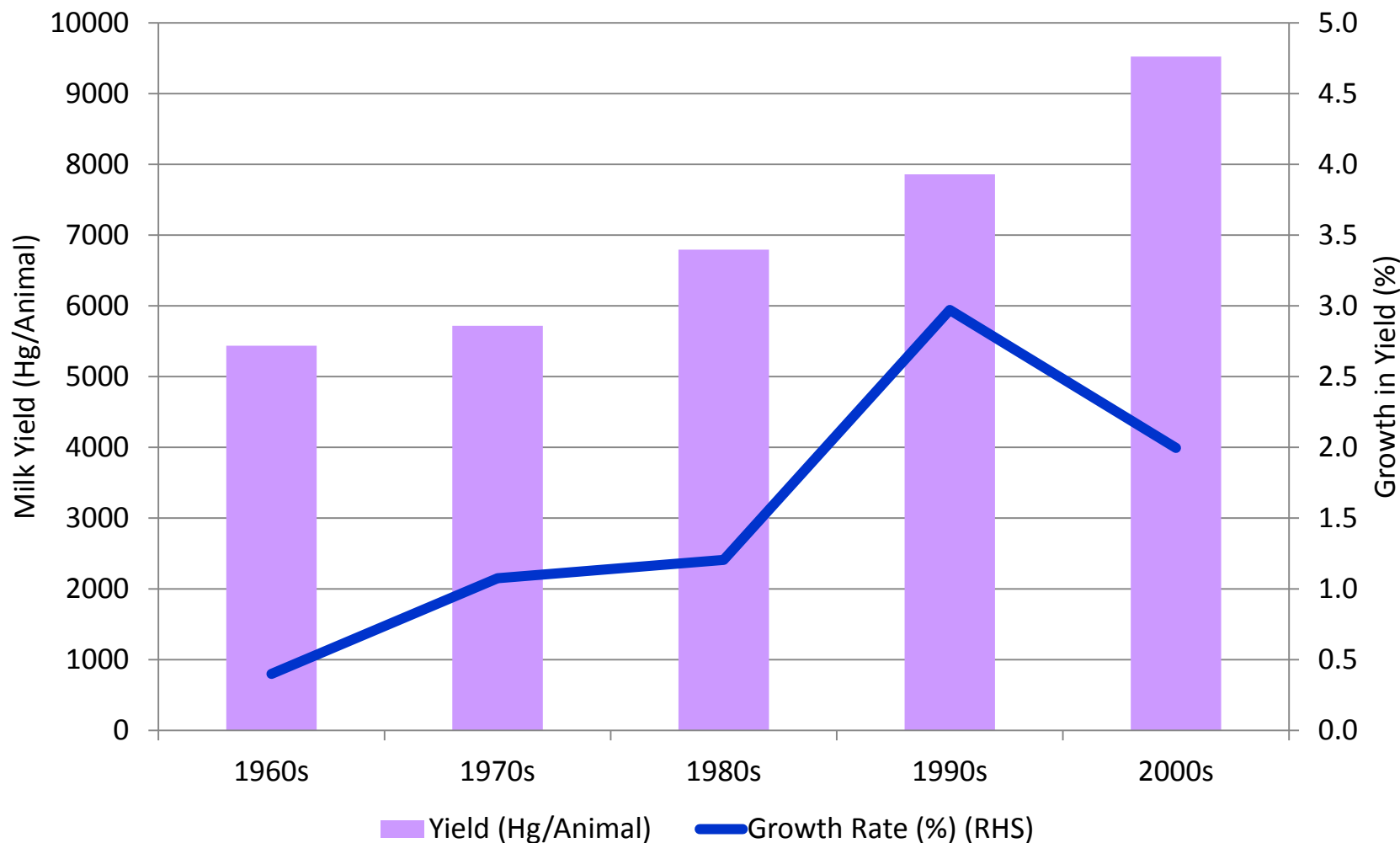
Productivity Differentials

State-wise yield of total pulses in 2009-10 (kg per hectare)





Slowing Growth in Milk Yields

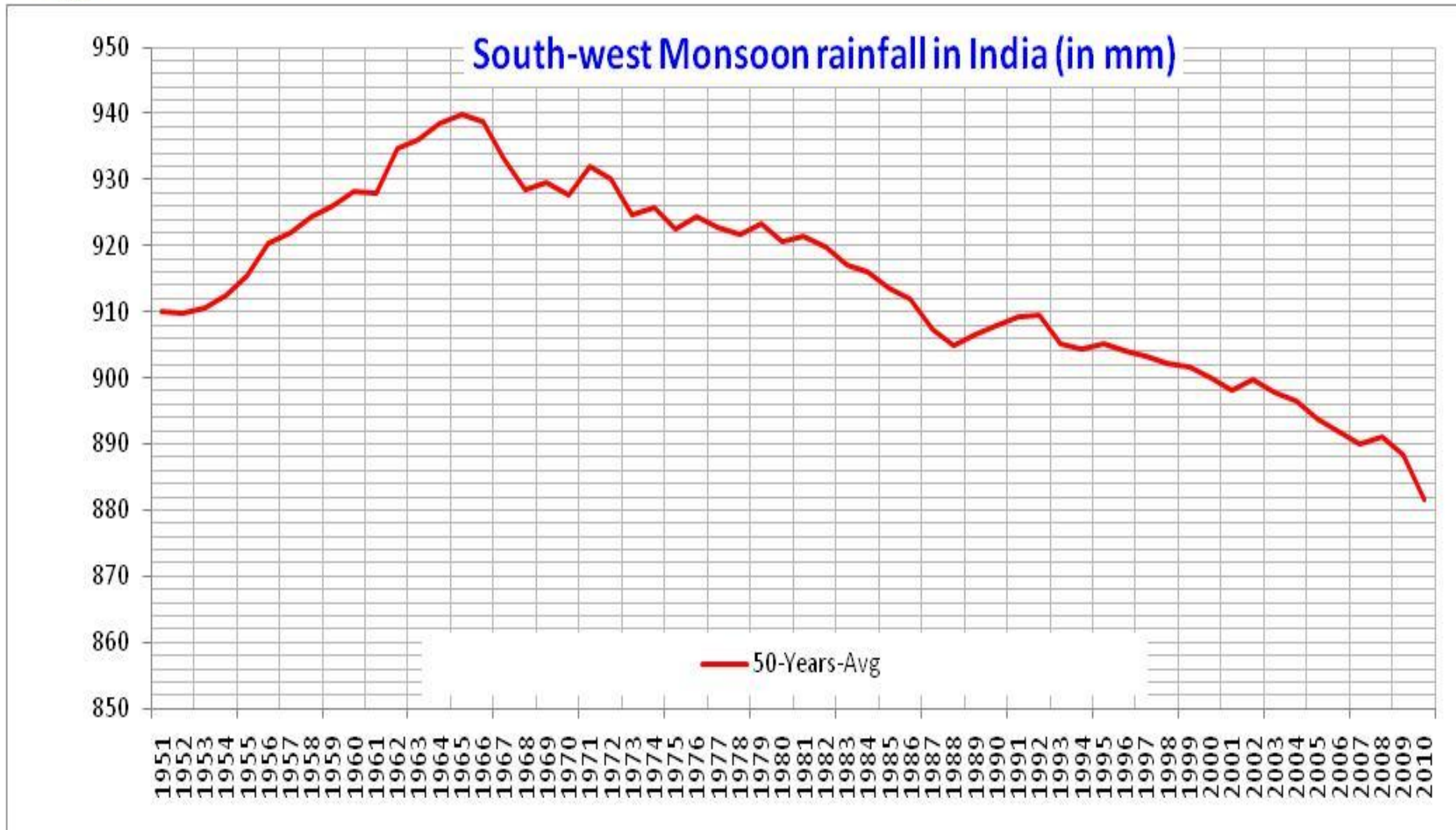


Source: FAO



South-west Monsoon Rainfall

50 year moving average



•IMD-LPA is calculated every 10 years as the 50 years average i.e.

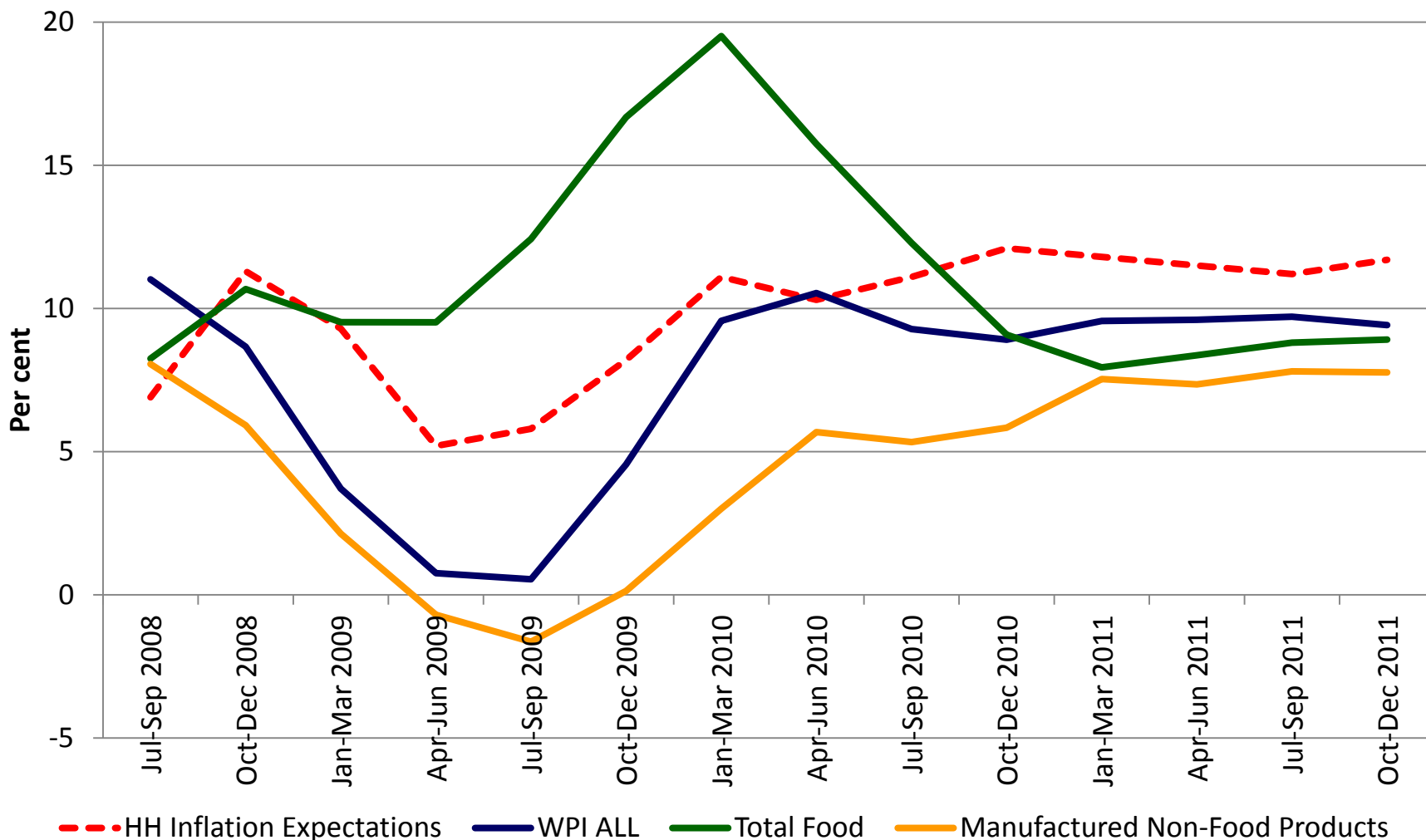
•IMD LPA for 2011-2019 is 89 cm and is the average rainfall over the country as a whole for the period 1951-2000.



POLICY IMPLICATIONS



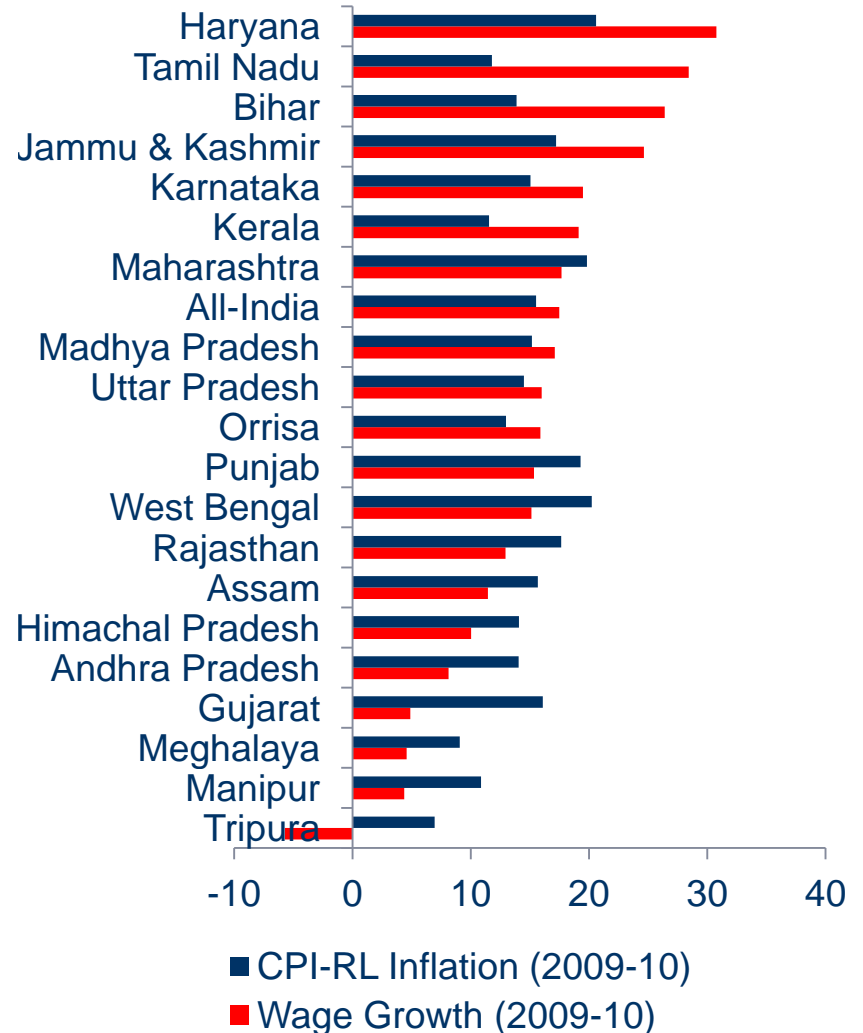
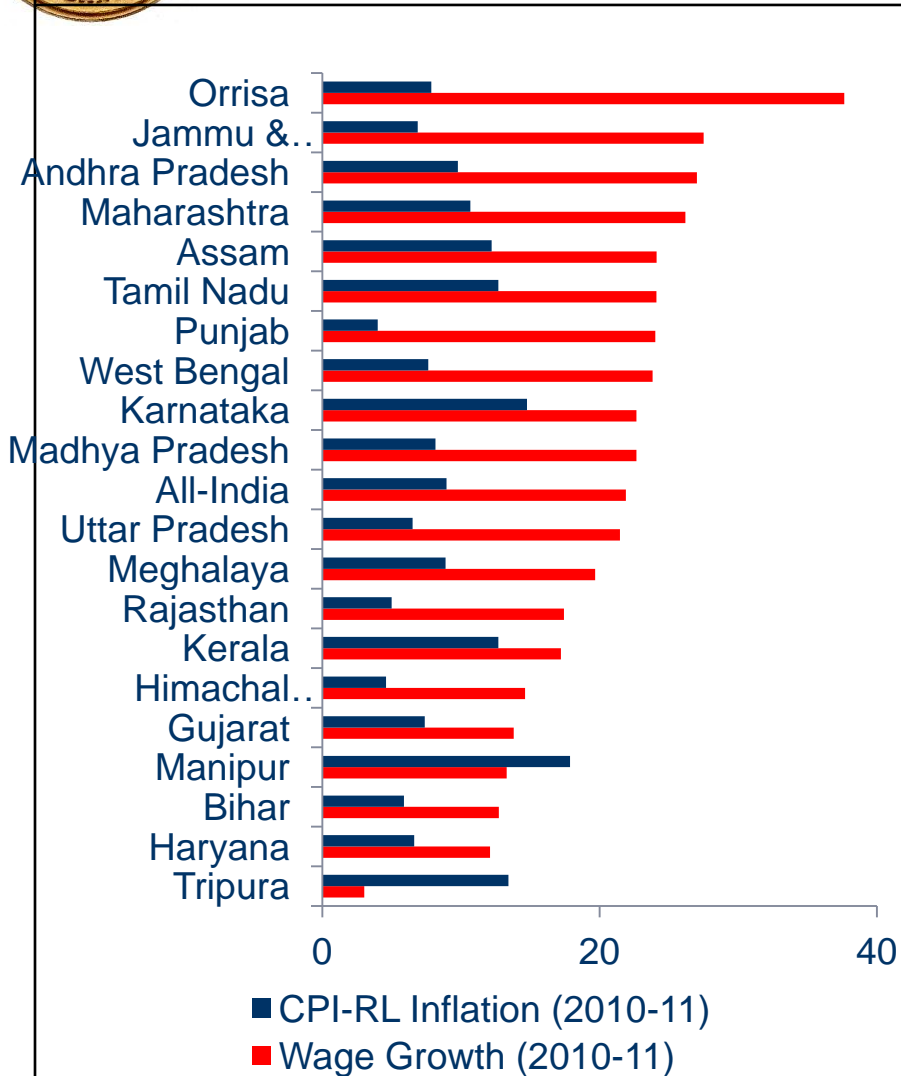
Inflation and Inflation Expectations





Rising Wages

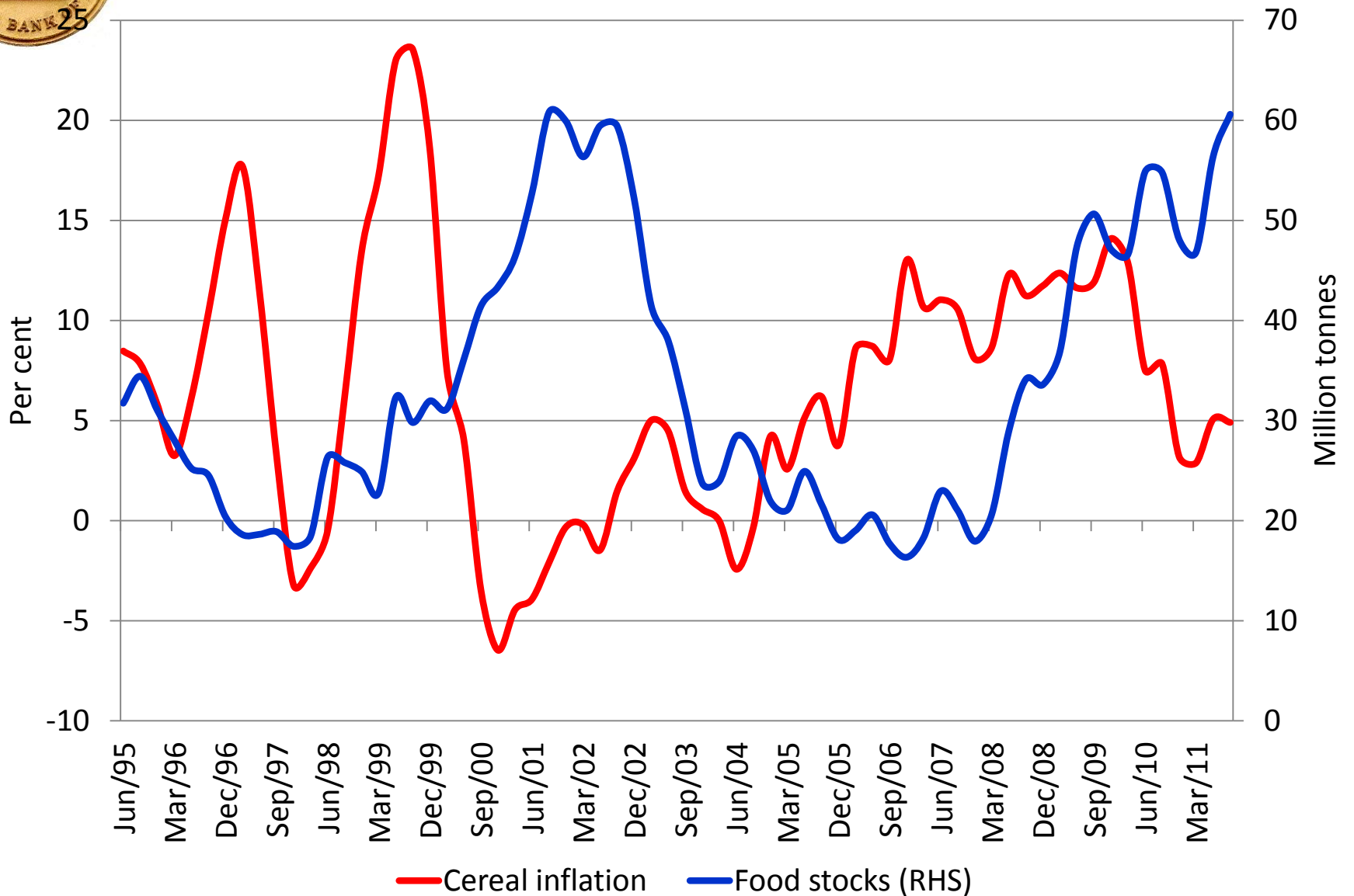
CPI-Rural Labourers Inflation and Wage Growth*



* Y-o-Y Growth in March; Rural Unskilled Labourer (Male) Wage. **Source:** Indian Labour Journal: Labour Bureau, Ministry of Labour.



Cereal Stocks and Prices





Policy Implications

- ◆ **Persistence and Expectations**
 - Food inflation part of core inflation
 - Wage-price feedback
 - Persistent supply shock implies slower growth for any given rate of inflation

- ◆ **Supply Responses**
 - Opportunities for productivity increases
 - Product and region-specific constraints
 - Threats from water scarcity
 - Role of stocks