



SIRIMAL ABEYRATNE

Sirimal Abeyratne has a PhD degree from Free University of Amsterdam, MA and MPhil degrees from International Institute of Social Studies, The Hague, and Bachelor's degree from University of Colombo. While his teaching and research interests are in the field of international trade and development, he has published a series of research work in the areas of regional trade, policy reforms and liberalization, economic dimensions of civil conflicts, development policy issues, and the current economic affairs and issues relating to growth and stability. He has been a Visiting Fellow at Ryukoku University in Kyoto (Japan), Australian National University in Canberra, University of Trento (Italy), University of Economics in HCMC (Vietnam), and at International University of Japan. He has served as a researcher and a consultant to international organizations such as ADB, ILO, UNDP, JICA, and World Bank, local and international research institutes, government agencies and corporate sector organizations in Sri Lanka.



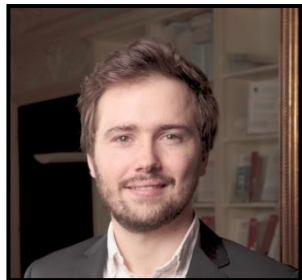
ROSA ABRAHAM

Rosa is a PhD Scholar at the Institute for Social and Economic Change, Bangalore. Her research examines the informal labour force in India, with particular focus on the informal workers in the formal/organised sector. Prior to my PhD, she worked as a researcher with Ashoka Trust for Research in Ecology and Environment. Rosa completed her Masters in Economics (Development) from the University of Bath. Her research interests include informalisation of labour, social security, education and its role in the labour market.



PRADIP BHUYAN

Pradip is currently a Director in Grade 'E' in the Department of Statistics & Information Management (DSIM), Reserve Bank of India (RBI), Mumbai, India. He is in RBI from July 1995. Prior to joining RBI, he worked as post graduate lecturer in the Department of Statistics, Cotton College, Guwahati, India for three years from 1992 to 1995. He was a junior research fellow (CSIR-UGC) at Delhi University, India in 1991-92. He was also selected as a Visiting Fellow by the Bank for International Settlements, Basel, Switzerland from August 2010 to January 2011. Mr. Bhuyan's current work area is on research, statistics and information management on banking. Most of these activities are in connection with monetary aggregates used in monetary policy of the country released by RBI. He is also working on countercyclical capital buffer for banks in India which is a requirement under Basel III guidelines, on development of index of service production for banking sector in India. He has closely worked in assessment of differential premium for banks for deposits insurance, estimation of tail risk of banks, credit risk modelling, project on economic capital framework for RBI, model validation etc. He has authored/co-authored quite a few published papers one of which was published in an international journal.



LUCAS CHANCEL

Lucas Chancel is a social scientist, with expertise in the economics of inequality and in environmental policy. His work focuses on the measurement of economic inequality, its interactions with sustainable development and on the implementation of social and ecological policies. Lucas is Co-Director of the World Inequality Lab and of WID.world at the Paris School of Economics (PSE). He is also a Senior Research Fellow at the Institute for Sustainable Development and International Relations (IDDRI) and Lecturer at Sciences Po.



SUBRAMANIAM CHANDRASEKHAR

An alumnus of Delhi School of Economics and Pennsylvania State University, S Chandrasekhar is presently Professor, at Indira Gandhi Institute of Development Research, Mumbai. From May 2010 – Mar 2011, he served as Advisor to President of Confederation of Indian Industry and Co-Chairman and Managing Director of Jubilant Bhartia Group. Chandrasekhar is a recipient of the Fred H Bixby Fellowship awarded by Population Council, New York. He won the Japanese Award for Outstanding Research on Development at the Global Development Awards and Medals Competition 2011. His research interests include Rural-Urban Linkages, Urbanization, Worker Mobility (Commuting and Migration) and Income and Non Income Dimensions of Well Being.



PARAMJEET CHAWLA

Paramjeet Chawla is currently a PhD Scholar in Development Studies at Tata Institute of Social Sciences (TISS), Mumbai. She has recently completed her MPhil Degree with 8.3 CGPA, with a thesis on Social Exclusion at TISS Mumbai. She did her Masters in Development Economics from South Asian University, New Delhi with a 6.96 CGPA in 2015, with a thesis on Inequality in Education, and finished Economics Honors from Lady Shri Ram College for Women, University of Delhi with a 69.6 percentage (First Division). Her research interests are Development Economics, Social Exclusion, Poverty, Inequality, Education, Health, Feminism, Economic Geography and Urban Ethnography.



M. JAHANGIR ALAM CHOWDHURY

M. Jahangir Alam Chowdhury is Professor in the Department of Finance and the Executive Director of the Center for Microfinance and Development, University of Dhaka. He received his M.Com in Finance and Banking from the University of Dhaka and PhD in Banking and Finance from the University of Stirling. Prof. Chowdhury's research focuses on microfinance, poverty, inequality, entrepreneurship, and payment for ecosystem services. His research has been funded by the Association of Commonwealth Universities, SANDEE, University of Stirling, Royal Economic Society, Asian Scholarship Foundation, Government of Japan, Bureau of Business Research, Partnership for Economic Policy, and Grand Challenges Canada. Professor Chowdhury has published in various scholarly journals, including Progress in Development Studies, Journal of Small Business and Entrepreneurship, Journal of Business Studies, and Journal of Finance and Banking. Prof. Chowdhury has acted as a consultant to national and international agencies including the World Bank, CIDA, DFID, FAO, UNDP and PKSF.



MOUSUMI DAS

Dr. Mousumi Das holds a doctoral degree from Indira Gandhi Institute of Development Research (IGIDR) in Mumbai on Development Studies. She was a Visiting Fellow at the International Food Policy Research Institute (IFPRI) in Washington D.C. as a Sylvia Lane Mentor awarded by the Agricultural & Applied Economics Association (AAEA), U.S.A. She was working as an Associate Fellow with National Council of Applied Economic Research, New Delhi before joining IFMR. She is also consulting for the World Bank and NCAER. Her broader research interests are in the space of public policy focusing on food & nutrition, education, health, migration and gender related issues with a strong interest in applied micro-econometrics.



PANCHANAN DAS

Panchanan Das is a Professor of Economics teaching Time Series and Panel Data Econometrics at the Department of Economics of the University of Calcutta. Development Economics, Indian Economics, and Applied Macroeconomics are the broad research area of Prof. Das. He has published several articles on growth, inequality and poverty in referred journals and edited volume. He is a principal author of Economics I and Economics II, text books at the graduate level, published by Oxford University Press, New Delhi. He is a major contributor of West Bengal Development Report – 2008, published by Academic Foundation, New Delhi, in collaboration with the Planning Commission, Government of India. He has also contributed to the Routledge volume, Springer volume, Science and Technology volume of the CSIR.



TUSHAR DAS



SURAJIT DEB

Surajit Deb did his Ph. D. in Economics from Department of Economics, Delhi School of Economics, University of Delhi, in 2003 in the area of Macroeconomic Implications of Agricultural Price Movements and Time Series Econometrics. He has published extensively in academic journals, participated in international conferences and completed commissioned research projects for international organizations. He has acted as a member of the Working Group on Terms of Trade between the Agricultural and Non-agricultural Sectors during 2012-15 for the Ministry of Agriculture: Government of India, and is empanelled in the ICSSR Research Pool of Research Methodology Experts. He is working as an Associate Professor in Aryabhata College (University of Delhi) and his current interests include construction of Social Development Index for Indian states, analysis on inclusive growth and India-China comparisons.



BISHWANATH GOLDAR

Bishwanath Goldar is Retired Professor of Economics of the Institute of Economic Growth, Delhi. He is the Chairman of the Standing Committee on Industrial Statistics set up by the Central Statistics Office, and is associated with several other official committees. He specializes in industrial economics and international trade. The bulk of his research has been on productivity, employment, wages and price-cost margin in Indian industries, impact of trade reforms, and foreign direct investment in India. He has also undertaken studies on rural water supply in India and Bangladesh, water supply in Delhi, and on the environmental aspects of Indian industries including energy efficiency in Indian industrial firms and the impact of environmental management practices on profitability and market value of Indian industrial firms. Professor Goldar has an MA in Economics and Ph.D. from Delhi School of Economics, University of Delhi.



CARLOS GRADÍN

Carlos is a Research Fellow at the United Nations University World Institute for Development Economics Research (UNU-WIDER). He is on leave of absence from his previous appointment as professor of applied economics at the University of Vigo. Carlos holds a PhD in economics from the Autonomous University of Barcelona. His main research interest is the study of poverty, inequality and discrimination in both developed and developing countries. He is especially interested in those inequalities that occur between population groups (i.e. by gender, race, or ethnicity). His research deals with enhancing the empirical evidence as well as methodological tools for the measurement and understanding of those issues. His research has been published so far in specialized journals, such as the *Journal of Economic Inequality*, *Review of Income and Wealth*, *Review of Household Economics*, *Journal of Development Studies*, *Regional Studies*, *Journal of African Economies*, and *Industrial Relations*, among others.



BHABESH HAZARIKA

Dr. Bhabesh Hazarika is an Economist at the National Institute of Public Finance and Policy (NIPFP), New Delhi. His research areas are public finance management, health economics, development economics, economics of the choice decision, and entrepreneurship. Dr. Hazarika has studied at the Indian Institute of Technology Kharagpur (Ph.D. in Economics from Department of Humanities and Social Sciences) and Gauhati University, Guwahati (M.A. in Economics). He has published his research papers in peer reviewed journals like *Technological Forecasting and Social Change*, *Asian Journal of Women's Studies*, *Journal of Small Business & Entrepreneurship*, and *International Journal of Social Economics*. Dr. Hazarika is a member of various professional associations including Southern Economic Association, Indian Society for Ecological Economics, and also reviews for a couple of national and international journals.



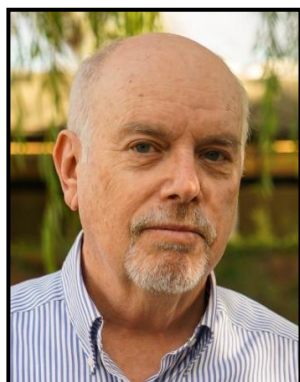
SANDHYA S. IYER

Sandhya Iyer is an Associate Professor and Chairperson of Centre For Public Policy, Habitat and Human Development at the School for Development Studies, Tata Institute of Social Sciences, Mumbai. She is a Development Economist, focusing on poverty, inequality and human development issues. She has many publications to her credit in the areas of human development estimation, equilibrium modeling on multidimensional poverty, institutional analysis and decentralisation, social security and social protection policies. Consultant and Team Leader with National and sub-National governments and other international agencies such as Ministry of Panchayati Raj, Government of India, Ministry of Rural Development, Government of Chhattisgarh; Collectorate-Ahmednagar; UNDP-India; Confederation of Indian Industry (Western Region), World Bank-funded Maharashtra Health Systems Development Project, Ministry of Health and Family Welfare-Government of India and World Bank; Institute For Participatory Practices (PRAXIS). Presented and published papers in national and international conferences Her current empirical work focuses on Human Development Progress, Estimation of Interlinkages of Inequalities in Development, Sustainable infrastructure development, Sustainable Development Goals with the T20 and BRICS.



JANNET FARIDA JACOB

Jannet is pursuing her doctoral degree with Centre for Development Studies (CDS) under Jawaharlal Nehru University (JNU) New Delhi. Her topic of research is “Higher Education and Inclusive Development: The Indian Experience”. She was awarded ICSSR fellowship from 2012 to 2014 and CDS fellowship from 2014-15. Currently Jannet is into the last phase of her research and will be submitting within a year. Earlier, she has co-authored a working paper: Chakraborty, Lekha; Yadawendra Singh and Jannet Farida Jacob (2013), " Analyzing Public Expenditure Benefit Incidence in Health Care: Evidence from India", Working Paper No. 748, The Levy Economics Institute, New York at www.levy.org. Besides, she has attended two international conferences and presented papers which are part of her thesis. These are: Conference paper ‘Determinants of Participation and Choice of Institutions in Higher Education in India’ in 14th GLOBELICS International Conference, Bandung, on “Innovation, Creativity and Development: Strategies for Inclusiveness and Sustainability”, October 29-31/2014. Conference paper ‘Institutional Evolution of Higher Education in India: Trends, and Patterns in Inputs and Outcomes’ in 12th GLOBELICS International Conference, Addis Ababa, on “Public-Private Partnership for the Promotion of Learning, Innovation, and Competency Building”, October 29-31/2014.



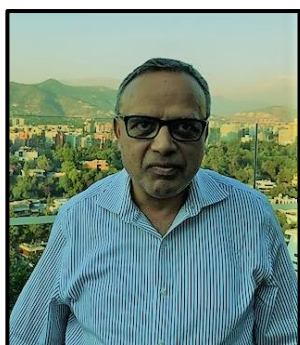
MOSHE JUSTMAN

Moshe Justman is Dean of the School of Economics and Business Administration at Ruppin Academic Center and Professor Emeritus of Economics at Ben Gurion University in Israel where he served as Dean of the Faculty of Humanities and Social Sciences. Other recent past positions are Professorial Research Fellow at the Melbourne of Melbourne and Director of the Civil Society Unit at the Van Leer Jerusalem Institute. He holds a B Sc (Mathematics and Statistics) and an M Sc (Mathematics) from the Hebrew University of Jerusalem, and a PhD (Business Economics) from Harvard University. He has also held visiting positions at Carnegie Mellon University, People’s University of China and Case Western Reserve University, and was president of the Israel Economics Association. His research centers on the economics of education, combining theoretical, empirical and policy perspectives. His research has addressed the roles of public and private education; access to higher education; intergenerational mobility; compulsory schooling; the gender gap in STEM subjects; and the role of education in forging cultural identities. He has also done extensive work on education indicators and on measurement in education, particularly through standardized tests. Earlier work focused on the economics of innovation and technical change and on regional development. He has published extensively in international journals, including the *American Economic Review*, *Review of Economic Studies*, *Review of Economics and Statistics*, *Journal of the European Economic Association*, *Journal of Public Economics*, *Journal of Urban Economics* and *Research Policy*. He also co-authored a book, *The Political Economy of Education*, with Mark Gradstein and Wolfgang Meier (MIT Press, 2005).



NATASHA ISRAT KABIR

Natasha Israt Kabir is a Freelance Researcher, Adjunct Lecturer at the department of Law and Justice, Jahangirnagar University, Dhaka, Bangladesh, Charles Wallace Trust Fellow, U.K and U.S State Department alumni as well. She is the founder President of BRIDGE Foundation and social business entrepreneur as well for the excluded deaf and mute artists in Bangladesh entitled with “Magical Art of Silence. She finished her first post-graduation and graduation from the Department of International Relations, Jahangirnagar University, Dhaka, Bangladesh and 2nd Post-Graduation being a UNESCO Madanjeet Singh Institute of South Asia Regional Cooperation scholar while studying at Pondicherry Central University, India. Her Interests are: Colonialism & Nationalism In South Asia, Peace and Conflict Resolution in South Asia, China in International Politics, Contemporary International Relations, Introduction To Society, Culture, Economy of South Asia, Research Methodology, Energy Security in South Asia, Environmental Issues In South Asia, European Integration, Institutions, Policies and Programs, Diaspora Study, Government and Politics in South Asia, Contemporary Issues IN South Asia, South Asia in World Affairs, Regional Cooperation in South Asia, Foreign Policy, Sociology of Disaster Management.



CHANDER KANT

The author is an Associate Professor in Department of Economics, Stillman School of Business, Seton Hall University, New Jersey. He has published in Journal of International Economics, Journal of Public Economics, World Economy, Journal of Policy Modeling, and other journals. He is a Fulbright scholar and a Senior Fellow of the American Institute of Indian Studies. He has earlier worked on transfer pricing, capital flight, capital inflows, etc. His current research interests are on role of institutions in economic development.



CHANDANA MAITRA

Dr. Chandana Maitra is currently teaching at the School of Economics, The University of Sydney, Australia. She received her doctoral degree from the School of Economics, University of Queensland in 2013. She is an applied development economist with special interest in the areas of poverty, food security and maternal, neonatal and child health. She has considerable knowledge in survey-based research and economic evaluation technique such as cost benefit analysis.

**BEYZA URAL MARCHAND**

Beyza Ural Marchand is an Associate Professor in the Department of Economics at the University of Alberta. Her main areas of expertise are economic development and international trade, with a particular focus on the impact of globalization on poverty, income distribution, and consumer prices. She has also published work on the effects of energy consumption on households. Her research has been published in such journals as the Journal of International Economics, the Journal of Development Economics, the Journal of Economic Behavior and Organization, the Brookings Institution India Policy Forum and the Journal of International Trade and Economic Development.

**BALAKRUSHNA PADHI**

Balakrushna Padhi is a Doctoral scholar in Economics at the Centre for the Study of Regional Development, Jawaharlal Nehru University, New Delhi. His research interest includes issues in the areas of Development economics especially labour and welfare, poverty and inequality. His Ph.D. topic is about, examining Income Mobility and Inequality Dynamics in the Indian Labour Market. Prior to this he has done his MPhil. in Applied Economics at Centre for Development Studies, Trivandrum, Kerala. He has also published few papers in some academic Journals and Edited Volumes. He has also worked as a research assistant and consultant in many institutions such as, IIM Indore,

CDS, Trivandrum, ISIS New Delhi.

**SEEMA SANGITA**

Seema Sangita is a faculty in the Economics program at TERI University, New Delhi. She has a Ph.D. in Economics from UC Davis. Her research interests include international trade, migration, urban economics, economic growth and development. Her doctoral work examined the inter-linkages between international trade and migration via information flows in diasporic business networks. She has also worked on estimating bilateral trade potential between India and Central Asia. Her recent work has a focus on migration and development. In the past she has taught at Humboldt State University and Santa Clara

University and has worked as Economist at Global Development Network and as Associate Fellow at NCAER. She has also held the IDRC-TTI fellowship at Institute of Economic Growth.



RAHUL SURESH SAPKAL

Rahul Suresh Sapkal holds PhD degree in Law and Economics with European Doctorate Program in Law and Economics at University of Hamburg (Germany), Erasmus Rotterdam University (The Netherlands) and University of Bologna (Italy). Presently, Dr. Sapkal teaches Economics and Law and Economics at National Law University Mumbai. Prior to joining the PhD program, Dr. Sapkal has earned his Master's degree in Development Studies from Tata Institute of Social Sciences, Mumbai and Bachelor's degree in Commerce and Economics from University of Mumbai. Dr. Sapkal has worked as a research associate with OECD, International Labour Organization, New Delhi, and the Tata Institute of Social Sciences, Mumbai. Dr. Sapkal has more than five years of applied empirical research work experience with Tata Institute of Social Sciences, Centre for Enquiry into Health and Allied Themes and International Labour Organization. Dr. Sapkal has a research affiliate with IZA, Bonn (Institute of Labour Study), University of Bonn, Germany. Apart from teaching, Dr. Sapkal is working as an external consultant with UNICEF India. Dr. Sapkal's research interest involves the application of economic tools to legal analysis, law and development, economic analysis of law and regulation, development economics and applied microeconometrics.



PETRA SAUER

Petra Sauer is post doctoral researcher at the Department of Economics and the Research Institute Economics of Inequality (INEQ) at the Vienna University of Economics and Business (WU). She is also affiliated with the Wittgenstein Centre for Demography and Global Human Capital (WIC – IIASA, VID, WU). Petra Sauer obtained her Ph.D from WU Vienna. In her research she is interested in the mechanisms via which socio-economic inequalities manifest over peoples' lifecycle and across generations. In this regard, the political economy of education and work build the center of her work. For her dissertation on "Macro-economic Consequences of Education (In) equality" she received an award from the Dr. Maria Schaumayer foundation. The ongoing research projects of Petra Sauer deal with the distribution of education by age and gender, the relation between education and income inequality and labour market integration of migrants.



NITYA SAXENA

Nitya Saxena is doctoral student at Indian Institute of Management Indore in Economics area. Her thesis work pertains to estimation of disease burden at sub-national level, its linkage with resource allocation and relevant methodological concerns. She has presented her work at Doctoral Colloquium, IGIDR and other international platforms. Her research interest includes health economics and financing, epidemiological transition, healthcare quality and related areas.



ANINDITA SENGUPTA

Anindita Sengupta is working as an Associate Professor of Economics in Hooghly Women's College, affiliated to the University of Burdwan, West Bengal. She completed her post-graduation from the department of Economics, University of Calcutta in 1994, with the specialization in Advanced Economic Theory. She has been awarded Ph. D. from University of Calcutta in 2011. Her areas of research interest are Migration, Labour Economics, Inequality, Wellbeing, Gender Discrimination, Industry, etc. She has published articles in many national and international level peer reviewed journals, in several edited books by renowned publishers. She has written two textbooks jointly with Dr. Panchanan Das, Professor of Economics, University of Calcutta, for undergraduate students of Commerce published by Oxford University Press. She has also written a research monograph published by LAP LAMBERT Academic Publishing, Germany. She has presented research papers in many national and international level academic conferences within and outside India. She is a member of several national and international level professional bodies.



AMARJIT SINGH SETHI

Former Dean of the Faculty of Economics & Business, Dr Amarjit Singh Sethi has been a Senior Professor at the Punjab School of Economics, Guru Nanak Dev University, Amritsar. Earlier, a member of both, Senate and Syndicate of GNDU, Prof. Sethi has put in nearly 41 years' Continuous/ Regular Teaching & Research Experience in Different Universities (viz., HP Agricultural University, Palampur; Punjab Agricultural University, Ludhiana and GND University, Amritsar). Having done his M.Sc. and Post-M.Sc. Diploma in Statistics from the IASRI, New Delhi, Dr Sethi did his Ph.D. in Quantitative Economics from the GND University, Amritsar.



KARAN SINGHAL

Karan Singhal is currently working as a Research Associate at Indian Institute of Management Ahmedabad studying the impact of the 12(1)(c) provision under the Right to Education Act. He holds a master's degree in economics from the Centre for Development Studies, Trivandrum. Before joining IIM-A, he has assisted many professors and interned at various organisations such as Kerala State Planning Board; Centre for Economic and Social Studies, Hyderabad; Centre for Development Studies, Trivandrum; Janwani (MCCIA), Pune; and Zephyr Financial Services, Mumbai. He has also researched on prospecting funders and mapping organisations for education and youth related activities with consultants from Asian Development Bank, and United Nations Development Programme (Kenya) as part of the United Nations Volunteering (UNV) initiative. He is broadly interested in development economics and his current work looks at aspects of gender and education. He has also written editorials on issues related to gender, film and policy published in online platforms such as The Wire, Quint, DailyO and Mango Informant.



JITENDRA KUMAR SINHA



ANJANA THAMPI

Anjana Thampi is a doctoral candidate at the Centre for Economic Studies and Planning, Jawaharlal Nehru University, New Delhi. Her research interests include development economics and environmental economics. Her doctoral thesis studies the nutritional impact of food transfers in India, in the context of the continuing debate on cash versus in-kind transfers. The co-authored paper that she is presenting at the conference studies the trends in income inequality among social groups in India and compares them with the trends in polarization.



C. VEERAMANI

C. Veeramani is an Associate Professor at Indira Gandhi Institute of Development Research (IGIDR) Mumbai. He holds Ph. D and M. Phil in Economics from JNU, New Delhi. He was a Visiting Fellow at Crawford School of Public Policy, Australian National University. Prior to joining IGIDR, he worked in ICRIER New Delhi and IIT Bombay. He is the recipient of EXIM Bank International Economic Development Research Award 2003 for the best doctoral dissertation in International Economics. He is the Joint Managing Editor of Journal of Quantitative Economics (Springer) and Economics Area Editor of Journal of Indian Business Research (Emerald). His recent research papers deal with issues such as India's export performance, industrial productivity, global production networks and trade in value added, international trade and labor market outcomes, and impact of global crises on international trade.